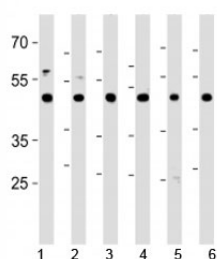


CTBP1 Antibody (F44416)

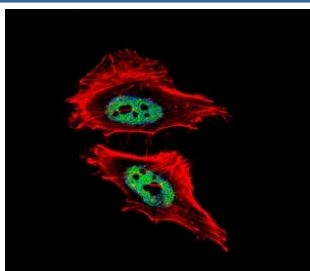
Catalog No.	Formulation	Size
F44416-0.4ML	In 1X PBS, pH 7.4, with 0.09% sodium azide	0.4 ml
F44416-0.08ML	In 1X PBS, pH 7.4, with 0.09% sodium azide	0.08 ml

Bulk quote request

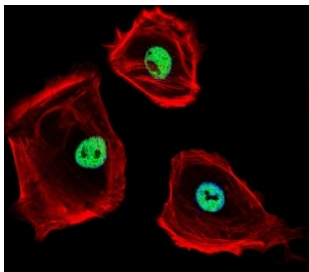
Availability	1-3 business days
Species Reactivity	Human, Mouse, Rat
Format	Antigen affinity purified
Clonality	Polyclonal (rabbit origin)
Isotype	Rabbit Ig
Purity	Antigen affinity
UniProt	Q13363
Applications	Western Blot : 1:1000 Immunofluorescence : 1:10-1:50
Limitations	This CTBP1 antibody is available for research use only.



CTBP1 antibody western blot analysis in 1) HeLa, 2) HL-60, 3) Jurkat, 4) Raji cell lines, 5) mouse brain and 6) rat brain tissue lysate. Predicted molecular weight ~48 kDa.



Fluorescent confocal image of HeLa cells stained with CTBP1 antibody. Alexa Fluor 488 secondary was used (green). CTBP1 immunoreactivity is localized to the nucleus.



Fluorescent confocal image of SK-BR-3 cells stained with CTBP1 antibody. Alexa Fluor 488 secondary was used (green). CTBP1 immunoreactivity is localized to the nucleus.

Description

This gene encodes a protein that binds to the C-terminus of adenovirus E1A proteins. This phosphoprotein is a transcriptional repressor and may play a role during cellular proliferation. This protein and the product of a second closely related gene, CTBP2, can dimerize. Both proteins can also interact with a polycomb group protein complex which participates in regulation of gene expression during development. Alternative splicing of transcripts from this gene results in multiple transcript variants.

Application Notes

Titration of the CTBP1 antibody may be required due to differences in protocols and secondary/substrate sensitivity.

Immunogen

A portion of amino acids 413-440 from the human protein was used as the immunogen for this CTBP1 antibody.

Storage

Aliquot the CTBP1 antibody and store frozen at -20oC or colder. Avoid repeated freeze-thaw cycles.