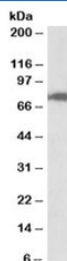


## CSTF3 Antibody (R35607)

Catalog No.	Formulation	Size
R35607-100UG	0.5 mg/ml in 1X TBS, pH7.3, with 0.5% BSA (US sourced) and 0.02% sodium azide	100 ug

[Bulk quote request](#)

Availability	1-3 business days
Species Reactivity	Human
Predicted Reactivity	Dog, Mouse, Rat
Format	Antigen affinity purified
Host	Goat
Clonality	Polyclonal (goat origin)
Isotype	Goat Ig
Purity	Antigen affinity
Gene ID	1479
Applications	Western Blot : 0.1-0.3ug/ml ELISA (peptide) LOD : 1:128000
Limitations	This CSTF3 antibody is available for research use only.



Western blot testing of nuclear HeLa lysate with CSTF3 antibody at 0.1ug/ml. Predicted molecular weight: ~83kDa but routinely observed at ~77kDa.

## Description

Additional name(s) for this target protein: Cleavage stimulation factor subunit 3; Cleavage stimulation factor, 3' pre-RNA, subunit 3, 77kDa; CSTF 77 kDa subunit; CSTF-77

## Application Notes

Optimal dilution of the CSTF3 antibody should be determined by the researcher.

1. This CSTF3 antibody is specific for isoform 1.

## **Immunogen**

Amino acids RETKGKLPSYKE were used as the immunogen for this CSTF3 antibody.

## **Storage**

Aliquot and store the CSTF3 antibody at -20oC.