

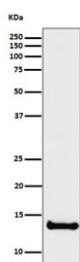
CSTB Antibody / Cystatin B / Stefin B [clone 28C59] (RQ8447)

Catalog No.	Formulation	Size
RQ8447	Antibody in PBS with 0.02% sodium azide, 50% glycerol and 0.4-0.5mg/ml BSA	100 ul

Recombinant **RABBIT MONOCLONAL**

[Bulk quote request](#)

Availability	1-3 business days
Species Reactivity	Human
Format	Purified
Clonality	Recombinant Rabbit Monoclonal
Isotype	Rabbit IgG
Clone Name	28C59
Purity	Affinity chromatography
UniProt	P04080
Applications	Western Blot : 1:500-1:2000
Limitations	This CSTB antibody is available for research use only.



Western blot testing of human U-87 MG with CSTB antibody. Predicted molecular weight ~11 kDa.

Description

This is an intracellular thiol proteinase inhibitor. Tightly binding reversible inhibitor of cathepsins L, H and B. [UniProt]

Application Notes

Optimal dilution of the CSTB antibody should be determined by the researcher.

Immunogen

A synthetic peptide derived from human Cystatin B protein was used as the immunogen for the CSTB antibody.

Storage

Store the CSTB antibody at -20oC.