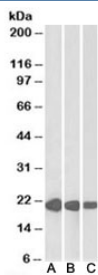


CSRP3 Antibody (R33238)

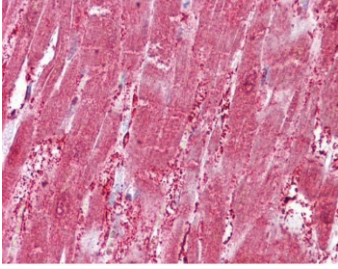
Catalog No.	Formulation	Size
R33238-100UG	0.5 mg/ml in 1X TBS, pH7.3, with 0.5% BSA (US sourced) and 0.02% sodium azide	100 ug

[Bulk quote request](#)

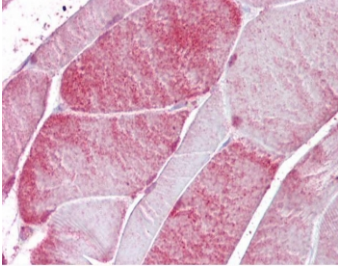
Availability	1-3 business days
Species Reactivity	Human, Mouse, Rat
Predicted Reactivity	Dog, Cow
Format	Antigen affinity purified
Host	Goat
Clonality	Polyclonal (goat origin)
Isotype	Goat Ig
Purity	Antigen affinity
Gene ID	8048
Localization	Cytoplasmic
Applications	Western Blot : 0.01-0.03ug/ml IHC (FFPE) : 2.5ug/ml ELISA (peptide) LOD : 1:32000
Limitations	This CSRP3 antibody is available for research use only.



Western blot testing of human [A], mouse [B] and rat [C] heart lysate with CSRP3 antibody at 0.01ug/ml. Predicted molecular weight: ~21 kDa.



IHC testing of FFPE human heart tissue with CSRP3 antibody at 2.5ug/ml. Required HIER: steamed antigen retrieval with pH6 citrate buffer; AP-staining.



IHC testing of FFPE human skeletal muscle tissue with CSRP3 antibody at 2.5ug/ml. Required HIER: steamed antigen retrieval with pH6 citrate buffer; AP-staining.

Description

Additional name(s) for this target protein: Cysteine and glycine-rich protein 3

Application Notes

Optimal dilution of the CSRP3 antibody should be determined by the researcher.

Immunogen

Amino acids CGKSLESTNVTDKD were used as the immunogen for this CSRP3 antibody.

Storage

Aliquot and store the CSRP3 antibody at -20oC.