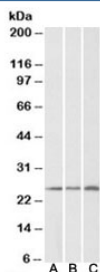


CSRP2 Antibody (R33965)

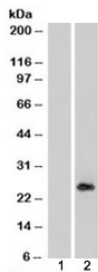
Catalog No.	Formulation	Size
R33965-100UG	0.5 mg/ml in 1X TBS, pH7.3, with 0.5% BSA (US sourced) and 0.02% sodium azide	100 ug

[Bulk quote request](#)

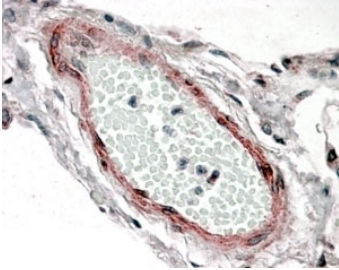
Availability	1-3 business days
Species Reactivity	Human, Mouse, Rat
Predicted Reactivity	Horse
Format	Antigen affinity purified
Host	Goat
Clonality	Polyclonal (goat origin)
Isotype	Goat Ig
Purity	Antigen affinity
Gene ID	1466
Applications	Western Blot : 0.2-1ug/ml Immunohistochemistry (FFPE) : 3-6ug/ml ELISA (peptide) LOD : 1:64000
Limitations	This CSRP2 antibody is available for research use only.



Western blot testing of human [A], mouse [B] and rat [C] kidney lysates with CSRP2 antibody at 0.2ug/ml. Predicted/observed molecular weight: ~21/26kDa.



Western blot of HEK293 lysate overexpressing CSRP2 probed with CSRP2 antibody (mock transfection in lane 1). Predicted/observed molecular weight: ~21/26kDa.



IHC staining of FFPE human lung with CSRP2 antibody at 3.8ug/ml. HIER: steamed with pH6 citrate buffer, AP-staining.

Description

Additional name(s) for this target protein: Cysteine and glycine-rich protein 2

Application Notes

Optimal dilution of the CSRP2 antibody should be determined by the researcher.

Immunogen

Amino acids ERLGIKPESVQP were used as the immunogen for this CSRP2 antibody.

Storage

Aliquot and store the CSRP2 antibody at -20oC.