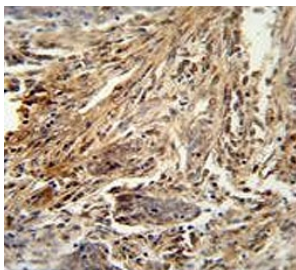


CSF2 Antibody / Colony Stimulating Factor 2 / GMCSF (F54554)

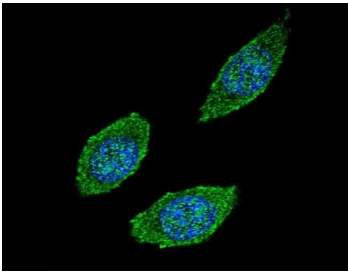
Catalog No.	Formulation	Size
F54554-0.4ML	In 1X PBS, pH 7.4, with 0.09% sodium azide	0.4 ml
F54554-0.08ML	In 1X PBS, pH 7.4, with 0.09% sodium azide	0.08 ml

[Bulk quote request](#)

Availability	1-3 business days
Species Reactivity	Human
Format	Purified
Host	Rabbit
Clonality	Polyclonal (rabbit origin)
Isotype	Rabbit IgG
Purity	Antigen affinity purified
UniProt	P04141
Applications	Immunofluorescence : 1:25 Flow Cytometry : 1:25 (1x10e6 cells) Immunohistochemistry (FFPE) : 1:25 Western Blot : 1:500-1:2000
Limitations	This CSF2 antibody is available for research use only.



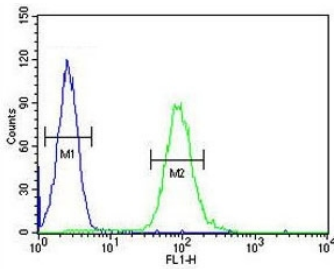
CSF2 Antibody Lung Carcinoma Immunohistochemistry. IHC testing of FFPE human lung carcinoma tissue with CSF2 antibody. HIER: steam section in pH6 citrate buffer for 20 min and allow to cool prior to staining.



CSF2 Antibody IF. Immunofluorescent staining of human HEK293 cells with CSF2 antibody (green) and DAPI nuclear stain (blue).



CSF2 Antibody HL60 WB. Western blot testing of human HL60 cell lysate with CSF2 antibody. Expected molecular weight: 14-35 kDa depending on glycosylation.



CSF2 Antibody FACS. Flow cytometry testing of human HL60 cells with CSF2 antibody; Blue=isotype control, Green= CSF2 antibody.

Description

CSF2 is a cytokine that controls the production, differentiation, and function of granulocytes and macrophages. The active form of the protein is found extracellularly as a homodimer. This gene has been localized to a cluster of related genes at chromosome region 5q31, which is known to be associated with interstitial deletions in the 5q- syndrome and acute myelogenous leukemia. Other genes in the cluster include those encoding interleukins 4, 5, and 13. [provided by RefSeq].

For a reference GM-CSF antibody with validated specificity and consistent detection, see [clone CSF2/3403](#).

Application Notes

The stated application concentrations are suggested starting points. Titration of the CSF2 antibody may be required due to differences in protocols and secondary/substrate sensitivity.

Immunogen

A portion of amino acids 59-85 from the human protein was used as the immunogen for the CSF2 antibody.

Storage

Aliquot the CSF2 antibody and store frozen at -20°C or colder. Avoid repeated freeze-thaw cycles.

