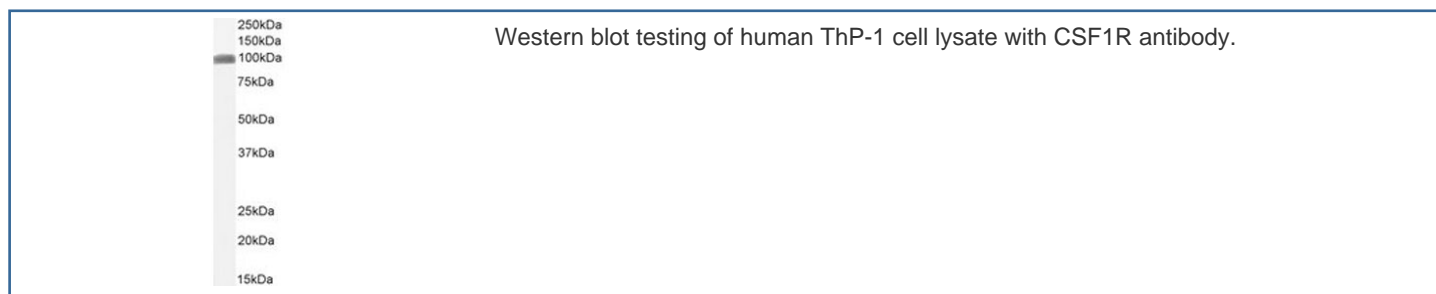


CSF1R Antibody (R34782)

Catalog No.	Formulation	Size
R34782-100UG	0.5 mg/ml in 1X TBS, pH7.3, with 0.5% BSA (US sourced) and 0.02% sodium azide	100 ug

[Bulk quote request](#)

Availability	1-3 business days
Species Reactivity	Human
Format	Antigen affinity purified
Host	Goat
Clonality	Polyclonal (goat origin)
Isotype	Goat Ig
Purity	Antigen affinity
UniProt	P07333
Gene ID	1436
Applications	Western Blot : 1.5-3ug/ml ELISA (peptide) LOD : 1:8000
Limitations	This CSF1R antibody is available for research use only.



Description

Additional name(s) for this target protein: (Macrophage) Colony stimulating factor 1 receptor; CSF1R

Application Notes

Optimal dilution of the CSF1R antibody should be determined by the researcher.

Immunogen

Amino acids NDSFSEQDLDK were used as the immunogen for this CSF1R antibody.

Storage

Aliquot and store the CSF1R antibody at -20oC.