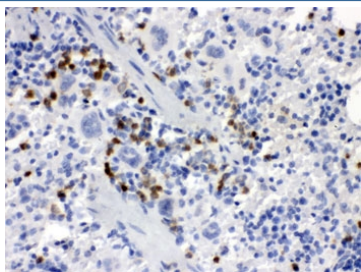


Csf-1 Antibody (R31901)

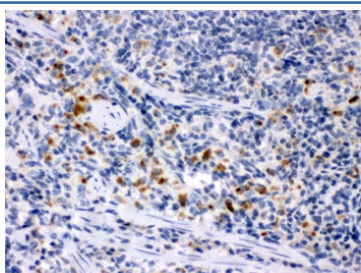
Catalog No.	Formulation	Size
R31901	0.5mg/ml if reconstituted with 0.2ml sterile DI water	100 ug

Bulk quote request

Availability	1-3 business days
Species Reactivity	Mouse, Rat
Format	Antigen affinity purified
Clonality	Polyclonal (rabbit origin)
Isotype	Rabbit IgG
Purity	Antigen affinity
Buffer	Lyophilized from 1X PBS with 2.5% BSA and 0.025% sodium azide
UniProt	P07141
Localization	Cytoplasmic, membrane
Applications	IHC (FFPE) : 0.5-1ug/ml ELISA : 0.1-0.5ug/ml (mouse protein tested); request BSA-free format for coating
Limitations	This Csf-1 antibody is available for research use only.



IHC testing of FFPE mouse spleen with Csf-1 antibody. HIER: Boil the paraffin sections in pH 6, 10mM citrate buffer for 20 minutes and allow to cool prior to staining.



IHC testing of FFPE rat spleen with Csf-1 antibody. HIER: Boil the paraffin sections in pH 6, 10mM citrate buffer for 20 minutes and allow to cool prior to staining.

Description

Macrophage Colony Stimulating Factor 1, also called MCSF or CSF1, is a hematopoietic growth factor that is involved in the proliferation, differentiation, and survival of monocytes, macrophages, and bone marrow progenitor cells. MCSF affects macrophages and monocytes in several ways, including stimulating increased phagocytic and chemotactic activity, and increased tumour cell cytotoxicity. The role of MCSF is not only restricted to the monocyte/macrophage cell lineage. By interacting with its membrane receptor (CSF1R or MCSFR encoded by the c-fms proto-oncogene), MCSF also modulates the proliferation of earlier hematopoietic progenitors and influence numerous physiological processes involved in immunology, metabolism, fertility and pregnancy.

Application Notes

Optimal dilution of the Csf-1 antibody should be determined by the researcher.

Immunogen

Amino acids 33-262 of mouse Colony stimulating factor 1 were used as the immunogen for the Csf-1 antibody.

Storage

After reconstitution, the Csf-1 antibody can be stored for up to one month at 4°C. For long-term, aliquot and store at -20°C. Avoid repeated freezing and thawing.