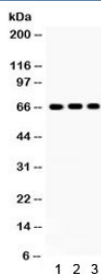


Cryptochrome I Antibody (R32242)

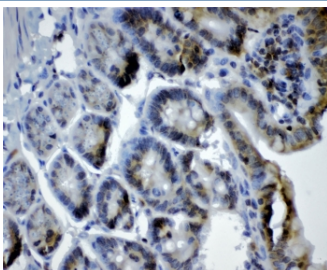
Catalog No.	Formulation	Size
R32242	0.5mg/ml if reconstituted with 0.2ml sterile DI water	100 ug

[Bulk quote request](#)

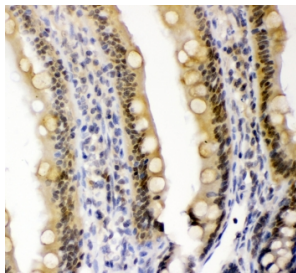
Availability	1-3 business days
Species Reactivity	Human, Rat
Format	Antigen affinity purified
Host	Rabbit
Clonality	Polyclonal (rabbit origin)
Isotype	Rabbit IgG
Purity	Antigen affinity
Buffer	Lyophilized from 1X PBS with 2.5% BSA and 0.025% sodium azide
UniProt	Q16526
Localization	Nuclear and cytoplasmic
Applications	Western Blot : 0.1-0.5ug/ml IHC (FFPE) : 1-2ug/ml
Limitations	This Cryptochrome I antibody is available for research use only.



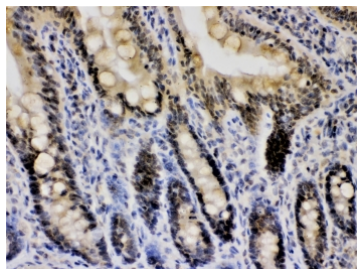
Western blot testing of 1) rat brain, 2) rat testis, 3) human HeLa lysate with Cryptochrome I antibody. Predicted/observed molecular weight ~66 kDa.



IHC staining of FFPE mouse intestine with Cryptochrome I antibody at 1ug/ml. HIER: boil tissue sections in pH6, 10mM citrate buffer, for 10-20 min followed by cooling at RT for 20 min.



IHC staining of FFPE rat intestine with Cryptochrome I antibody at 1ug/ml. HIER: boil tissue sections in pH6, 10mM citrate buffer, for 10-20 min followed by cooling at RT for 20 min.



IHC staining of FFPE rat intestine with Cryptochrome I antibody at 1ug/ml. HIER: boil tissue sections in pH6, 10mM citrate buffer, for 10-20 min followed by cooling at RT for 20 min.

Description

This gene encodes a flavin adenine dinucleotide-binding protein that is a key component of the circadian core oscillator complex, which regulates the circadian clock. And this gene is upregulated by CLOCK/ARNTL heterodimers but then represses this upregulation in a feedback loop using PER/CRY heterodimers to interact with CLOCK/ARNTL. Polymorphisms in this gene have been associated with altered sleep patterns. The encoded protein is widely conserved across plants and animals. Loss of the related gene in mouse results in a shortened circadian cycle in complete darkness.

Application Notes

Optimal dilution of the Cryptochrome I antibody should be determined by the researcher.

Immunogen

Amino acids FQTLISKMEPLEIPVETITSEVIEKCTTPLSDDHDEK of human Cryptochrome I were used as the immunogen for the Cryptochrome I antibody.

Storage

After reconstitution, the Cryptochrome I antibody can be stored for up to one month at 4°C. For long-term, aliquot and store at -20°C. Avoid repeated freezing and thawing.