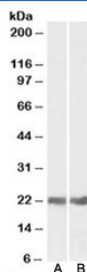


CRYAB Antibody (R35667)

Catalog No.	Formulation	Size
R35667-100UG	0.5 mg/ml in 1X TBS, pH7.3, with 0.5% BSA (US sourced) and 0.02% sodium azide	100 ug

[Bulk quote request](#)

Availability	1-3 business days
Species Reactivity	Human, Mouse
Predicted Reactivity	Rat
Format	Antigen affinity purified
Host	Goat
Clonality	Polyclonal (goat origin)
Isotype	Goat Ig
Purity	Antigen affinity
Gene ID	1410
Applications	Western Blot : 0.01-0.03ug/ml ELISA (peptide) LOD : 1:128000
Limitations	This CRYAB antibody is available for research use only.



Western blot testing of mouse [A] and rat [B] eye lysates with CRYAB antibody at 0.05ug/ml. Predicted molecular weight: ~20 kDa.

Description

Additional name(s) for this target protein: Crystallin alpha B; Heat-shock 20 kD like-protein

For a microarray-validated reference CRYAB antibody with confirmed specificity, see [clone CRYAB/4657](#).

Application Notes

Optimal dilution of the CRYAB antibody should be determined by the researcher.

Immunogen

Amino acids RLEKDRFSVNLD were used as the immunogen for this CRYAB antibody.

Storage

Aliquot and store the CRYAB antibody at -20oC.