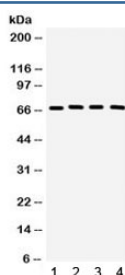


CRY2 Antibody / Cryptochrome 2 (R32258)

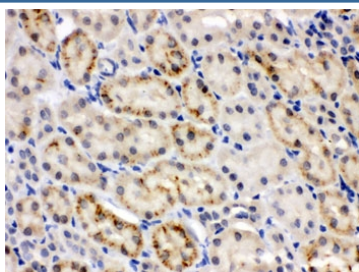
Catalog No.	Formulation	Size
R32258	0.5mg/ml if reconstituted with 0.2ml sterile DI water	100 ug

Bulk quote request

Availability	1-3 business days
Species Reactivity	Human, Mouse, Rat
Format	Antigen affinity purified
Host	Rabbit
Clonality	Polyclonal (rabbit origin)
Isotype	Rabbit IgG
Purity	Antigen affinity
Buffer	Lyophilized from 1X PBS with 2.5% BSA and 0.025% sodium azide
UniProt	Q49AN0
Localization	Cytoplasmic, membrane
Applications	Western Blot : 0.1-0.5ug/ml IHC (FFPE) : 0.5-1ug/ml
Limitations	This CRY2 antibody is available for research use only.



Western blot testing of 1) rat testis, 2) rat brain, 3) mouse brain, 4) human 22RV1 lysate with CRY2 antibody. Expected/observed molecular weight ~67 kDa.



IHC testing of FFPE mouse kidney with CRY2 antibody. HIER: Boil the paraffin sections in pH 6, 10mM citrate buffer for 20 minutes and allow to cool prior to staining.

Description

This gene encodes a flavin adenine dinucleotide-binding protein that is a key component of the circadian core oscillator complex, which regulates the circadian clock. And it is upregulated by CLOCK/ARNTL heterodimers but then represses this upregulation in a feedback loop using PER/CRY heterodimers to interact with CLOCK/ARNTL. Polymorphisms in this gene have been associated with altered sleep patterns. The encoded protein is widely conserved across plants and animals. Two transcript variants encoding different isoforms have been found for this gene.

Application Notes

Optimal dilution of the CRY2 antibody should be determined by the researcher.

Immunogen

Amino acids RFQAIISRMELPKKPVGLVTSQQMESCRAE of human CRY2 were used as the immunogen for the CRY2 antibody.

Storage

After reconstitution, the CRY2 antibody can be stored for up to one month at 4°C. For long-term, aliquot and store at -20°C. Avoid repeated freezing and thawing.