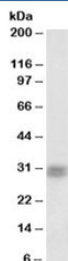


## CRX Antibody (R33576)

| Catalog No.  | Formulation   | Size   |
|--------------|---|--------|
| R33576-100UG | 0.5 mg/ml in 1X TBS, pH7.3, with 0.5% BSA (US sourced) and 0.02% sodium azide | 100 ug |

[Bulk quote request](#)

|                      |   |
|----------------------|---|
| Availability         | 1-3 business days   |
| Species Reactivity   | Human, Mouse, Rat   |
| Predicted Reactivity | Pig, Cow  |
| Format               | Antigen affinity purified                                 |
| Host                 | Goat  |
| Clonality            | Polyclonal (goat origin)                                  |
| Isotype              | Goat Ig   |
| Purity               | Antigen affinity  |
| Gene ID              | 1406  |
| Applications         | Western Blot : 1-3ug/ml<br>ELISA (peptide) LOD : 1:128000 |
| Limitations          | This CRX antibody is available for research use only.     |



Western blot testing of rat retina lysate with CRX antibody at 1ug/ml. Predicted molecular weight: ~32kDa.

## Description

Additional name(s) for this target protein: Cone-rod homeobox

## Application Notes

Optimal dilution of the CRX antibody should be determined by the researcher.

## **Immunogen**

Amino acids DPLDYKDQSAWK were used as the immunogen for this CRX antibody.

## **Storage**

Aliquot and store the CRX antibody at -20oC.