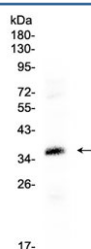


## CRX Antibody (R32644)

| Catalog No. | Formulation   | Size   |
|-------------|---|--------|
| R32644      | 0.5mg/ml if reconstituted with 0.2ml sterile DI water | 100 ug |

**Bulk quote request**

|                           |  |
|---------------------------|--|
| <b>Availability</b>       | 1-3 business days  |
| <b>Species Reactivity</b> | Human  |
| <b>Format</b>             | Antigen affinity purified                                  |
| <b>Clonality</b>          | Polyclonal (rabbit origin)                                 |
| <b>Isotype</b>            | Rabbit IgG   |
| <b>Purity</b>             | Antigen affinity   |
| <b>Buffer</b>             | Lyophilized from 1X PBS with 2.5% BSA, 0.025% sodium azide |
| <b>UniProt</b>            | O43186   |
| <b>Applications</b>       | Western Blot : 0.5-1ug/ml                                  |
| <b>Limitations</b>        | This CRX antibody is available for research use only.      |



Western blot testing of human HepG2 cell lysate with CRX antibody at 0.5ug/ml.  
Predicted molecular weight ~32 kDa.

## Description

Cone-rod homeobox protein is a protein that in humans is encoded by the CRX gene. The protein encoded by this gene is a photoreceptor-specific transcription factor which plays a role in the differentiation of photoreceptor cells. This homeodomain protein is necessary for the maintenance of normal cone and rod function. Mutations in this gene are associated with photoreceptor degeneration, Leber congenital amaurosis type III and the autosomal dominant cone-rod dystrophy 2. Several alternatively spliced transcript variants of this gene have been described, but the full-length nature of some variants has not been determined.

## Application Notes

Optimal dilution of the CRX antibody should be determined by the researcher.

## Immunogen

Amino acids 265-299 (DSLEFKDPTGTWKFTYNPMDPLDYKDQSAWKFAQIL) from the human protein were used as the immunogen for the CRX antibody.

## Storage

After reconstitution, the CRX antibody can be stored for up to one month at 4°C. For long-term, aliquot and store at -20°C. Avoid repeated freezing and thawing.