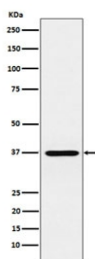


CRX Antibody / Cone-rod homeobox [clone AFIO-3] (RQ4732)

Catalog No.	Formulation	Size
RQ4732	Antibody in PBS with 0.02% sodium azide, 50% glycerol and 0.4-0.5mg/ml BSA	100 ul

[Bulk quote request](#)

Availability	1-2 weeks
Species Reactivity	Human
Format	Purified
Clonality	Rabbit Monoclonal
Isotype	Rabbit IgG
Clone Name	AFIO-3
Purity	Affinity purified
UniProt	O43186
Applications	Western Blot : 1:500-1:2000
Limitations	This CRX antibody is available for research use only.



Western blot testing of human Y79 cell lysate with CRX antibody. Predicted molecular weight ~32 kDa.

Description

The protein encoded by the CRX gene is a photoreceptor-specific transcription factor which plays a role in the differentiation of photoreceptor cells. This homeodomain protein is necessary for the maintenance of normal cone and rod function. Mutations in this gene are associated with photoreceptor degeneration, Leber congenital amaurosis type III and the autosomal dominant cone-rod dystrophy 2. [RefSeq]

Application Notes

Optimal dilution of the CRX antibody should be determined by the researcher.

Immunogen

A synthetic peptide specific to human CRX was used as the immunogen for the CRX antibody.

Storage

Store the CRX antibody at -20oC.