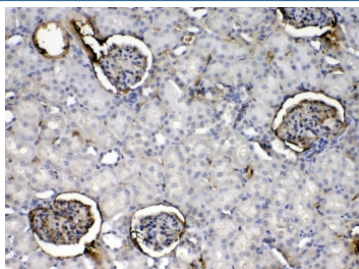


Crp Antibody (R32684)

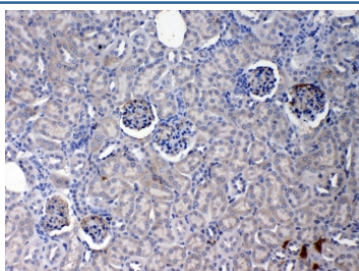
Catalog No.	Formulation	Size
R32684	0.5mg/ml if reconstituted with 0.2ml sterile DI water	100 ug

Bulk quote request

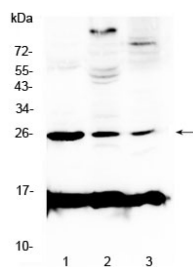
Availability	1-3 business days
Species Reactivity	Mouse, Rat
Format	Antigen affinity purified
Clonality	Polyclonal (rabbit origin)
Isotype	Rabbit IgG
Purity	Antigen affinity
Buffer	Lyophilized from 1X PBS with 2.5% BSA, 0.025% sodium azide
UniProt	P14847
Localization	Cytoplasmic, extracellular
Applications	Western Blot : 0.5-1ug/ml IHC (FFPE) : 1-2ug/ml ELISA : 0.1-0.5ug/ml (mouse protein tested; request BSA-free format for coating)
Limitations	This Crp antibody is available for research use only.



IHC testing of FFPE rat kidney tissue with Crp antibody at 1ug/ml. Required HIER: steam section in pH6 citrate buffer for 20 min and allow to cool prior to testing.



IHC testing of FFPE mouse kidney tissue with Crp antibody at 1ug/ml. Required HIER: steam section in pH6 citrate buffer for 20 min and allow to cool prior to testing.



Western blot testing of rat 1) spleen, 2) brain and 3) thymus tissue with Crp antibody at 0.5ug/ml. Predicted molecular weight ~25 kDa.

Description

C Reactive Protein (CRP) is a major acute phase reactant synthesized primarily in the liver hepatocytes. It is composed of five identical, 21,500-molecular weight subunits. CRP mediates activities associated with preimmune nonspecific host resistance. CRP shows the strongest association with cardiovascular events. It is detectable on the surface of about 4% of normal peripheral blood lymphocytes. Acute phase reactant CRP is produced in the liver.

Application Notes

Optimal dilution of the Crp antibody should be determined by the researcher.

Immunogen

Amino acids H20-S225 from the mouse protein were used as the immunogen for the Crp antibody.

Storage

After reconstitution, the Crp antibody can be stored for up to one month at 4oC. For long-term, aliquot and store at -20oC. Avoid repeated freezing and thawing.