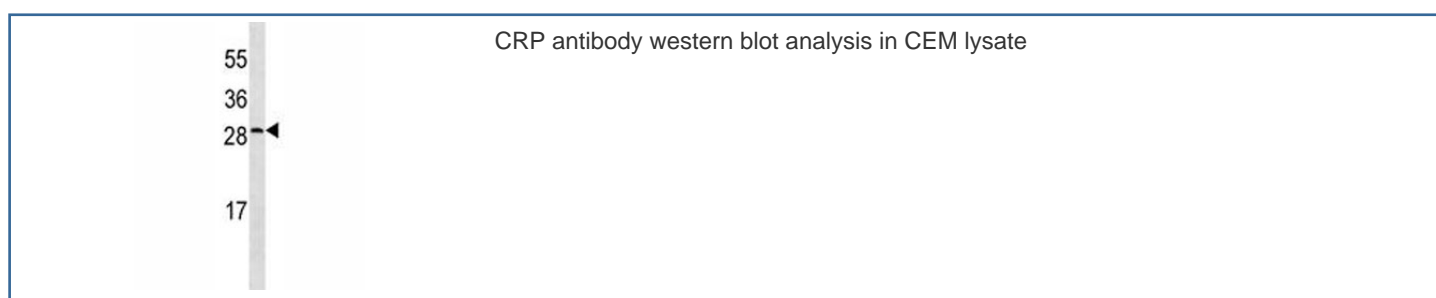


CRP Antibody (C-Reactive Protein) [clone 506CT15.5.3] (F53636)

Catalog No.	Formulation	Size
F53636-0.1ML	In ascites with 0.09% sodium azide	0.1 ml

[Bulk quote request](#)

Availability	1-3 business days
Species Reactivity	Human
Format	Ascites
Host	Mouse
Clonality	Monoclonal (mouse origin)
Isotype	Mouse IgG3
Clone Name	506CT15.5.3
Purity	Ascites
UniProt	P02741
Applications	Western Blot : 1:500-1:8000
Limitations	This CRP antibody is available for research use only.



Description

Displays several functions associated with host defense: it promotes agglutination, bacterial capsular swelling, phagocytosis and complement fixation through its calcium-dependent binding to phosphorylcholine. Can interact with DNA and histones and may scavenge nuclear material released from damaged circulating cells. [Wiki]

Application Notes

Titration of the CRP antibody may be required due to differences in protocols and secondary/substrate sensitivity.

Immunogen

A portion of amino acids 194-221 from the human protein was used as the immunogen for this CRP antibody.

Storage

Aliquot the CRP antibody and store frozen at -20oC or colder. Avoid repeated freeze-thaw cycles.