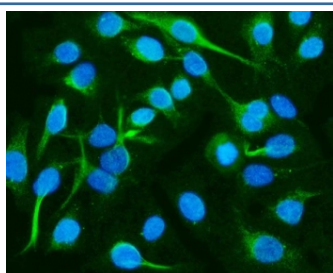


CRMP2 Antibody / DPYSL2 (RQ7974)

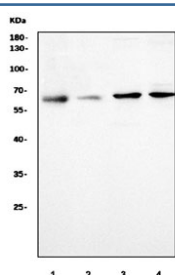
Catalog No.	Formulation	Size
RQ7974	0.5mg/ml if reconstituted with 0.2ml sterile DI water	100 ug

Bulk quote request

Availability	1-3 business days
Species Reactivity	Human, Mouse, Rat
Format	Antigen affinity purified
Clonality	Polyclonal (rabbit origin)
Isotype	Rabbit IgG
Purity	Antigen affinity purified
Buffer	Lyophilized from 1X PBS with 2% Trehalose
UniProt	Q16555
Localization	Cytoplasmic, cell membrane
Applications	Western Blot : 0.5-1ug/ml Immunofluorescence : 5ug/ml
Limitations	This CRMP2 antibody is available for research use only.



Immunofluorescent staining of FFPE human A549 cells with CRMP2 antibody (green) and DAPI nuclear stain (blue). HIER: steam section in pH6 citrate buffer for 20 min.



Western blot testing of 1) human U-87 MG, 2) human SH-SY5Y, 3) rat brain and 4) mouse brain tissue lysate with CRMP2 antibody. Predicted molecular weight ~62 kDa.

Description

Dihydropyrimidinase-related protein 2, also called Collapsin response mediator protein 2 (CRMP2), is an enzyme that in humans is encoded by the DPYSL2 gene. This gene encodes a member of the collapsin response mediator protein family. Collapsin response mediator proteins form homo- and hetero-tetramers and facilitate neuron guidance, growth and polarity. The encoded protein promotes microtubule assembly and is required for Sema3A-mediated growth cone collapse, and also plays a role in synaptic signaling through interactions with calcium channels. This gene has been implicated in multiple neurological disorders, and hyperphosphorylation of the encoded protein may play a key role in the development of Alzheimer's disease. Alternatively spliced transcript variants encoding multiple isoforms have been observed for this gene.

Application Notes

Optimal dilution of the CRMP2 antibody should be determined by the researcher.

Immunogen

Amino acids KDRFQLTDCQIYEVLVS were used as the immunogen for the CRMP2 antibody.

Storage

After reconstitution, the CRMP2 antibody can be stored for up to one month at 4°C. For long-term, aliquot and store at -20°C. Avoid repeated freezing and thawing.