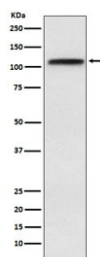


CRM1 Antibody / XPO1 / Exportin 1 / Chromosome region maintenance 1 [clone AEFD-24] (RQ4719)

Catalog No.	Formulation	Size
RQ4719	Antibody in PBS with 0.02% sodium azide, 50% glycerol and 0.4-0.5mg/ml BSA	100 ul

[Bulk quote request](#)

Availability	1-2 weeks
Species Reactivity	Human, Mouse, Rat
Format	Purified
Clonality	Rabbit Monoclonal
Isotype	Rabbit IgG
Clone Name	AEFD-24
Purity	Affinity purified
UniProt	O14980
Applications	Western Blot : 1:500-1:2000
Limitations	This CRM1 antibody is available for research use only.



Western blot testing of human HeLa cell lysate with CRM1 antibody. Predicted molecular weight ~123 kDa.

Description

Mediates the nuclear export of cellular proteins (cargos) bearing a leucine-rich nuclear export signal (NES) and of RNAs. In the nucleus, in association with RANBP3, binds cooperatively to the NES on its target protein and to the GTPase RAN in its active GTP-bound form (Ran-GTP). Docking of this complex to the nuclear pore complex (NPC) is mediated through binding to nucleoporins.

Application Notes

Optimal dilution of the CRM1 antibody should be determined by the researcher.

Immunogen

A synthetic peptide specific to human CRM1 / XPO1 was used as the immunogen for the CRM1 antibody.

Storage

Store the CRM1 antibody at -20oC.