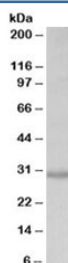


CRLS1 Antibody (R35758)

Catalog No.	Formulation	Size
R35758-100UG	0.5 mg/ml in 1X TBS, pH7.3, with 0.5% BSA (US sourced) and 0.02% sodium azide	100 ug

[Bulk quote request](#)

Availability	1-3 business days
Species Reactivity	Human
Predicted Reactivity	Cow, Dog, Mouse, Pig, Rat
Format	Antigen affinity purified
Host	Goat
Clonality	Polyclonal (goat origin)
Isotype	Goat Ig
Purity	Antigen affinity
Gene ID	54675
Applications	Western Blot : 0.2-0.6ug/ml ELISA (peptide) LOD : 1:64000
Limitations	This CRLS1 antibody is available for research use only.



Western blot testing of HEK293 lysate with CRLS1 antibody at 0.2ug/ml. Predicted molecular weight: ~32kDa.

Description

Additional name(s) for this target protein: Cardiolipin synthase 1

Application Notes

Optimal dilution of the CRLS1 antibody should be determined by the researcher.

Immunogen

Amino acids RSALGSALDPLADK were used as the immunogen for this CRLS1 antibody.

Storage

Aliquot and store the CRLS1 antibody at -20oC.