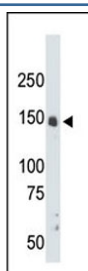


## CrkRS Antibody / CDK12 / Cyclin-dependent kinase 12 (F55075)

Catalog No.	Formulation	Size
F55075-0.4ML	In 1X PBS, pH 7.4, with 0.09% sodium azide	0.4 ml
F55075-0.08ML	In 1X PBS, pH 7.4, with 0.09% sodium azide	0.08 ml

[Bulk quote request](#)

<b>Availability</b>	1-2 business days
<b>Species Reactivity</b>	Human, Mouse
<b>Format</b>	Purified
<b>Clonality</b>	Polyclonal (rabbit origin)
<b>Isotype</b>	Rabbit Ig
<b>UniProt</b>	Q9NYV4
<b>Applications</b>	Western Blot : 1:500-1:1000
<b>Limitations</b>	This CrkRS antibody is available for research use only.



Western blot testing of mouse liver tissue lysate with CrkRS antibody. Predicted molecular weight ~164 kDa.

### Description

CrkRS, also known as Cdc2-related kinase, arginine/serine-rich, CDK12 and Cyclin-dependent kinase 12, is a cyclin-dependent kinase that phosphorylates the C-terminal domain (CTD) of the large subunit of RNA polymerase II (POLR2A), thereby acting as a key regulator of transcription elongation. It also regulates the expression of genes involved in DNA repair and is required for the maintenance of genomic stability.

### Application Notes

Titration of the CrkRS antibody may be required due to differences in protocols and secondary/substrate sensitivity.

### Immunogen

A portion of amino acids 1-30 from the human protein was used as the immunogen for this CrkRS antibody.

## Storage

Aliquot the CrkRS antibody and store frozen at -20oC or colder. Avoid repeated freeze-thaw cycles.