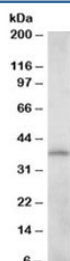


CrkL Antibody / Crk-like protein (R34471)

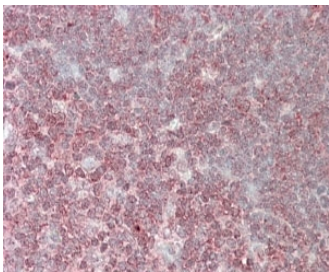
Catalog No.	Formulation	Size
R34471-100UG	0.5 mg/ml in 1X TBS, pH7.3, with 0.5% BSA (US sourced) and 0.02% sodium azide	100 ug

[Bulk quote request](#)

Availability	1-3 business days
Species Reactivity	Human
Predicted Reactivity	Mouse, Rat
Format	Antigen affinity purified
Host	Goat
Clonality	Polyclonal (goat origin)
Isotype	Goat Ig
Purity	Antigen affinity
Gene ID	1399
Applications	Western Blot : 0.01-0.03ug/ml Immunohistochemistry (FFPE) : 2.5-5ug/ml ELISA (peptide) LOD : 1:16000
Limitations	This CrkL antibody is available for research use only.



Western blot testing of K562 lysate with CrkL antibody at 0.01ug/ml. Expected molecular weight: 34~39kDa.



IHC staining of FFPE human thymus with CrkL antibody at 4ug/ml. HIER: steamed with pH6 citrate buffer, AP-staining.

Description

Additional name(s) for this target protein: V-crk avian sarcoma virus CT10 oncogene homolog-like

Application Notes

Optimal dilution of the CrkL antibody should be determined by the researcher.

Immunogen

Amino acids KIFDPQNPDENE were used as the immunogen for this CrkL antibody.

Storage

Aliquot and store the CrkL antibody at -20oC.