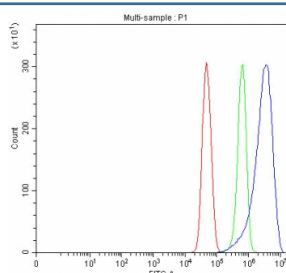


## CrkL Antibody / Crk-like protein (R30906)

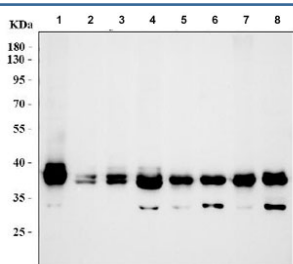
Catalog No.	Formulation	Size
R30906	0.5mg/ml if reconstituted with 0.2ml sterile DI water	100 ug

**Bulk quote request**

<b>Availability</b>	1-3 business days
<b>Species Reactivity</b>	Human, Mouse, Rat
<b>Format</b>	Antigen affinity purified
<b>Host</b>	Rabbit
<b>Clonality</b>	Polyclonal (rabbit origin)
<b>Isotype</b>	Rabbit IgG
<b>Purity</b>	Antigen affinity
<b>Buffer</b>	Lyophilized from 1X PBS with 2.5% BSA and 0.025% sodium azide/thimerosal
<b>UniProt</b>	P46109
<b>Applications</b>	Western Blot : 0.5-1ug/ml Flow Cytometry : 1-3ug/million cells
<b>Limitations</b>	This CrkL antibody is available for research use only.



Flow cytometry testing of fixed and permeabilized human U-251 cells with CrkL antibody at 1ug/million cells (blocked with goat sera); Red=cells alone, Green=isotype control, Blue= CrkL antibody.



Western blot testing of 1) human K562, 2) human 293T, 3) human U-20 OS, 4) human HeLa, 5) rat thymus, 6) rat brain, 7) mouse thymus and 8) mouse brain tissue lysate with CrkL antibody. Expected molecular weight: 34-39 kDa.

## Description

v-Crk sarcoma virus CT10 oncogene homolog(avian)-like), also called CrkL, encodes a 303-amino acid polypeptide with a predicted molecular mass of ~36 kD. While CrkL is not the human homolog of CRK, it is similar to protein-tyrosine kinases with SH2 and SH3 (src homology) domains. By fluorescence in situ hybridization, the gene is localized to chromosome 22q11, centromeric of the chronic myelogenous leukemia breakpoint region. Senechal et al.(1996) showed that CRKL becomes phosphorylated when overexpressed, activates Ras-dependent and JNK pathways, and transforms fibroblasts. The authors also found CrkL to be a substrate for the BCR-ABL tyrosine kinase, leading them to conclude that it is a tyrosine kinase and an oncogene. CrkL was required for normal cellular responses to Fgf8, including survival and migration, Erk activation, and target gene expression.

## Application Notes

The stated application concentrations are suggested starting amounts. Titration of the CrkL antibody may be required due to differences in protocols and secondary/substrate sensitivity.

## Immunogen

Amino acids 286-303 (FPFTHVKIFDPQNPENE-human) were used as the immunogen for this CrkL antibody.

## Storage

After reconstitution, the CrkL antibody can be stored for up to one month at 4°C. For long-term, aliquot and store at -20°C. Avoid repeated freezing and thawing.