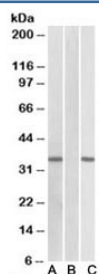


CRISP2 Antibody (R34366)

Catalog No.	Formulation	Size
R34366-100UG	0.5 mg/ml in 1X TBS, pH7.3, with 0.5% BSA (US sourced) and 0.02% sodium azide	100 ug

[Bulk quote request](#)

Availability	1-3 business days
Species Reactivity	Human
Predicted Reactivity	Cow, Dog, Pig
Format	Antigen affinity purified
Host	Goat
Clonality	Polyclonal (goat origin)
Isotype	Goat Ig
Purity	Antigen affinity
Gene ID	7180
Applications	Western Blot : 0.1-1 ug/ml ELISA (peptide) LOD : 1:128000
Limitations	This CRISP2 antibody is available for research use only.



Western blot of HEK293 transfected with human CRISP2-MYC tested with CRISP2 antibody (0.1ug/ml) in Lane A and anti-MYC (1/1000) in lane C. Mock-transfected HEK293 probed with CRISP2 (1ug/ml) in Lane B. Predicted molecular weight: ~27/31kDa (isoforms 1/2).

Description

Additional name(s) for this target protein: Cysteine-rich secretory protein 2, Glyceraldehyde-3-phosphate dehydrogenase-like 5, GAPDL5

Application Notes

Optimal dilution of the CRISP2 antibody should be determined by the researcher.

Immunogen

Amino acids KCTLQHSDPEDRK were used as the immunogen for this CRISP2 antibody.

Storage

Aliquot and store the CRISP2 antibody at -20oC.