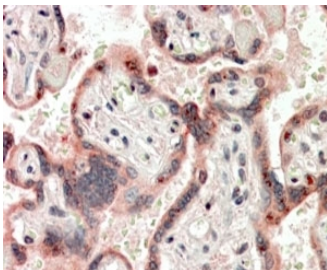


Cripto-1 Antibody (R36371)

Catalog No.	Formulation	Size
R36371-100UG	0.5 mg/ml in 1X TBS, pH7.3, with 0.5% BSA (US sourced) and 0.02% sodium azide	100 ug

[Bulk quote request](#)

Availability	1-3 business days
Species Reactivity	Human
Predicted Reactivity	Cow, Dog, Mouse, Rat
Format	Antigen affinity purified
Host	Goat
Clonality	Polyclonal (goat origin)
Isotype	Goat Ig
Purity	Antigen affinity
Gene ID	6997
Applications	Immunohistochemistry (FFPE) : 3-5ug/ml ELISA (peptide) LOD : 1:128000
Limitations	This Cripto-1 antibody is available for research use only.



IHC testing of FFPE human placenta with Cripto-1 antibody at 4ug/ml. HIER: steamed with pH6 citrate buffer, AP-staining.

Description

Additional name(s) for this target protein: Teratocarcinoma-derived growth factor 1; TDGF1

Application Notes

Optimal dilution of the Cripto-1 antibody should be determined by the researcher.

Immunogen

Amino acids YGRNCEHDVRKEN were used as the immunogen for this Cripto-1 antibody.

Storage

Aliquot and store the Cripto-1 antibody at -20oC.