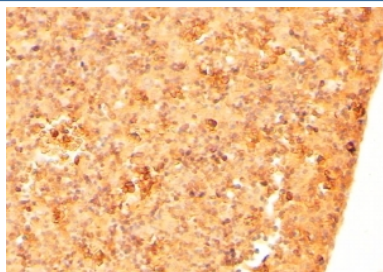


Cripto-1 Antibody (R34183)

Catalog No.	Formulation	Size
R34183-100UG	0.5 mg/ml in 1X TBS, pH7.3, with 0.5% BSA (US sourced) and 0.02% sodium azide	100 ug

Bulk quote request

Availability	1-3 business days
Species Reactivity	Human, Mouse
Predicted Reactivity	Rat
Format	Antigen affinity purified
Host	Goat
Clonality	Polyclonal (goat origin)
Isotype	Goat Ig
Purity	Antigen affinity
Gene ID	55997
Applications	Immunohistochemistry (FFPE) : 1-2ug/ml ELISA (peptide) LOD : 1:32000
Limitations	This Cripto-1 antibody is available for research use only.



IHC testing of FFPE mouse embryonic liver with Cripto-1 antibody. HIER: steamed with pH6 citrate buffer, HRP-staining.

Description

Additional name(s) for this target protein: Cryptic family 1; CFC1

Application Notes

Optimal dilution of the Cripto-1 antibody should be determined by the researcher.

Immunogen

Amino acids HFTGRYCEHDQRRSEC were used as the immunogen for this Cripto-1 antibody.

Storage

Aliquot and store the Cripto-1 antibody at -20oC.