

CRFR2D Antibody / CRHR2 (F40094)

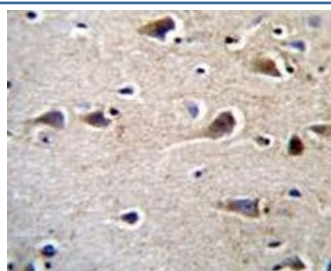
Catalog No.	Formulation	Size
F40094-0.4ML	In 1X PBS, pH 7.4, with 0.09% sodium azide	0.4 ml
F40094-0.08ML	In 1X PBS, pH 7.4, with 0.09% sodium azide	0.08 ml

[Bulk quote request](#)

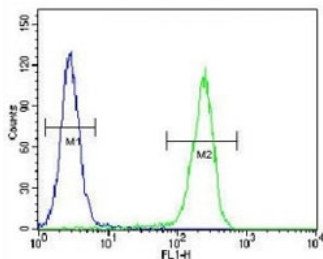
Availability	1-3 business days
Species Reactivity	Human
Format	Antigen affinity purified
Host	Rabbit
Clonality	Polyclonal (rabbit origin)
Isotype	Rabbit Ig
Purity	Antigen affinity
UniProt	Q13324
Applications	Western Blot : 1:1000 IHC (Paraffin) : 1:50-1:100 Flow Cytometry : 1:10-1:50
Limitations	This CRFR2D antibody is available for research use only.

95
72
55
36
28
17

CRFR2D antibody western blot analysis in HeLa lysate



CRFR2D antibody immunohistochemistry analysis in formalin fixed and paraffin embedded human brain tissue.



CRFR2D antibody flow cytometric analysis of HeLa cells (right histogram) compared to a negative control cell (left histogram). FITC-conjugated goat-anti-rabbit secondary Ab was used for the analysis.

Description

Liaw et al. (1996) [PubMed 8536644] stated that there are 2 G protein-coupled corticotropin-releasing hormone (CRH; MIM 122560) receptors, CRHR1 (MIM 122561) and CRHR2, which they termed the CRF2 receptor. CRH is a 41-amino acid peptide synthesized in the hypothalamus that is the principal neuroregulator of the hypothalamic-pituitary-adrenocortical axis and plays an important role in coordinating the endocrine, autonomic, and behavioral responses to stress and immune challenge.

Application Notes

Titration of the CRFR2D antibody may be required due to differences in protocols and secondary/substrate sensitivity.

Immunogen

This CRFR2D antibody was produced from rabbits immunized with a KLH conjugated synthetic peptide selected from the human CRFR2D.

Storage

Aliquot the CRFR2D antibody and store frozen at -20oC or colder. Avoid repeated freeze-thaw cycles.