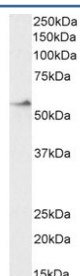


## CRF1 Antibody (R34787)

Catalog No.	Formulation	Size
R34787-100UG	0.5 mg/ml in 1X TBS, pH7.3, with 0.5% BSA (US sourced) and 0.02% sodium azide	100 ug

[Bulk quote request](#)

Availability	1-3 business days
Species Reactivity	Human
Format	Antigen affinity purified
Host	Goat
Clonality	Polyclonal (goat origin)
Isotype	Goat Ig
Purity	Antigen affinity
Gene ID	1394
Applications	Western Blot : 2-3ug/ml ELISA (peptide) LOD : 1:32000
Limitations	This CRF1 antibody is available for research use only.



Western blot testing of human duodenum lysate with CRF1 antibody at 2ug/ml.  
Predicted molecular weight: ~48/60-70 kDa (unmodified/glycosylated).

## Description

Additional name(s) for this target protein: Corticotropin releasing hormone receptor 1; CRHR1

## Application Notes

Optimal dilution of the CRF1 antibody should be determined by the researcher.

## Immunogen

Amino acids NEEKKSKVHYH were used as the immunogen for this CRF1 antibody.

## **Storage**

Aliquot and store the CRF1 antibody at -20oC.