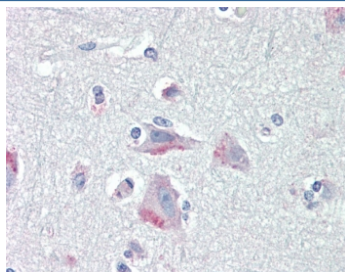


CRF1 Antibody (R34530)

| Catalog No. | Formulation | Size |
|--------------|---|--------|
| R34530-100UG | 0.5 mg/ml in 1X TBS, pH7.3, with 0.5% BSA (US sourced) and 0.02% sodium azide | 100 ug |

[Bulk quote request](#)

| | |
|----------------------|---|
| Availability | 1-3 business days |
| Species Reactivity | Human |
| Predicted Reactivity | Mouse, Rat, Sheep, Dog, Cow |
| Format | Antigen affinity purified |
| Host | Goat |
| Clonality | Polyclonal (goat origin) |
| Isotype | Goat Ig |
| Purity | Antigen affinity |
| Gene ID | 1394 |
| Applications | Immunohistochemistry (FFPE) : 5ug/ml ELISA (peptide) LOD : 1:16000 |
| Limitations | This CRF1 antibody is available for research use only. |



IHC testing of FFPE human cortex (brain) tissue with CRF1 antibody at 5ug/ml. Required HIER: steamed antigen retrieval with pH6 citrate buffer; AP-staining.

Description

Additional name(s) for this target protein: Corticotropin releasing hormone receptor 1, CRFR1

Application Notes

Optimal dilution of the CRF1 antibody should be determined by the researcher.

1. Reported to specifically stain mouse brain by IHC and IF.

Immunogen

Amino acids KLYYDNEKCWFGKR were used as the immunogen for this CRF1 antibody.

Storage

Aliquot and store the CRF1 antibody at -20oC.