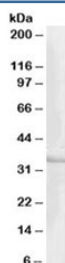


CREM Antibody (R34716)

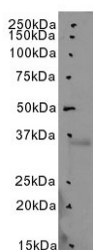
| Catalog No. | Formulation | Size |
|--------------|---|--------|
| R34716-100UG | 0.5 mg/ml in 1X TBS, pH7.3, with 0.5% BSA (US sourced) and 0.02% sodium azide | 100 ug |

[Bulk quote request](#)

| | |
|----------------------|--|
| Availability | 1-3 business days |
| Species Reactivity | Human |
| Predicted Reactivity | Mouse, Rat, Cow |
| Format | Antigen affinity purified |
| Host | Goat |
| Clonality | Polyclonal (goat origin) |
| Isotype | Goat Ig |
| Purity | Antigen affinity |
| Gene ID | 1390 |
| Applications | Western Blot : 1-3ug/ml ELISA (peptide) LOD : 1:16000 |
| Limitations | This CREM antibody is available for research use only. |



Western blot testing of human heart lysate with CREM antibody at 1ug/ml. Predicted molecular weight: ~33 kDa.



Western blot testing of human heart lysate with CREM antibody at 3ug/ml. Predicted molecular weight: ~33 kDa.

Description

Additional name(s) for this target protein: CAMP response element modulator, ICER

Application Notes

Optimal dilution of the CREM antibody should be determined by the researcher.

1. This CREM antibody will detect isoforms a/e/f/k/l/m/n/o/p/q.

Immunogen

Amino acids LETLKDICSPKTDY were used as the immunogen for this CREM antibody.

Storage

Aliquot and store the CREM antibody at -20oC.