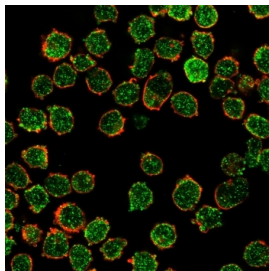


## CREB5 Antibody / CRE-BPa [clone PCR-PCREB5-1G8] (V9220)

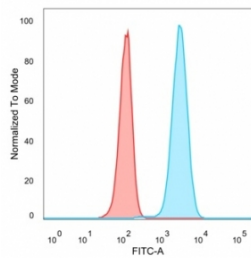
Catalog No.	Formulation	Size
V9220-100UG	0.2 mg/ml in 1X PBS with 0.1 mg/ml BSA (US sourced), 0.05% sodium azide	100 ug
V9220-20UG	0.2 mg/ml in 1X PBS with 0.1 mg/ml BSA (US sourced), 0.05% sodium azide	20 ug
V9220SAF-100UG	1 mg/ml in 1X PBS; BSA free, sodium azide free	100 ug

[Bulk quote request](#)

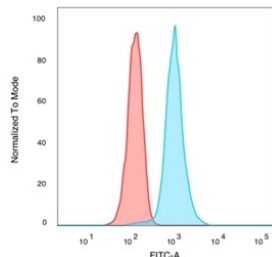
<b>Availability</b>	1-3 business days
<b>Species Reactivity</b>	Human
<b>Format</b>	Purified
<b>Host</b>	Mouse
<b>Clonality</b>	Monoclonal (mouse origin)
<b>Isotype</b>	Mouse IgG2b, kappa
<b>Clone Name</b>	PCR-PCREB5-1G8
<b>Purity</b>	Protein A/G affinity
<b>UniProt</b>	Q02930
<b>Localization</b>	Nucleus
<b>Applications</b>	Flow Cytometry : 1-2ug/million cells Immunofluorescence : 1-2ug/ml Western Blot : 1-2ug/ml
<b>Limitations</b>	This CREB5 antibody is available for research use only.



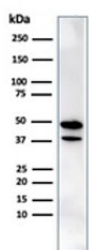
Immunofluorescent staining of PFA-fixed K562 cells stained with CREB5 antibody (green, clone PCR-PCREB5-1G8) and phalloidin (red).



FACS staining of PFA-fixed human HeLa cells with CREB5 antibody (blue, clone PCRP-CREB5-1G8), and unstained cells (red).

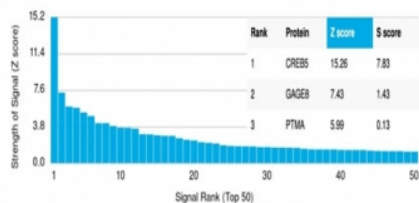


FACS staining of PFA-fixed human K562 cells with CREB5 antibody (blue, clone PCRP-CREB5-1G8), and unstained cells (red).



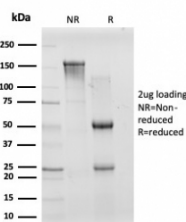
Western blot testing of human HeLa cell lysate using CREB5 antibody (clone PCRP-CREB5-1G8). Predicted molecular weight: ~57 kDa (alpha), ~56 kDa (beta), ~53 kDa (gamma), ~41 kDa (delta).

#### Human Protein Microarray Specificity Validation



Rank	Protein	Z score	S score
1	CREB5	15.26	7.83
2	GAGE3	7.43	1.43
3	PTMA	5.99	0.13

Analysis of HuProt(TM) microarray containing more than 19,000 full-length human proteins using CREB5 antibody (clone PCRP-CREB5-1G8). These results demonstrate the foremost specificity of the PCRP-CREB5-1G8 mAb. Z- and S- score: The Z-score represents the strength of a signal that an antibody (in combination with a fluorescently-tagged anti-IgG secondary Ab) produces when binding to a particular protein on the HuProt(TM) array. Z-scores are described in units of standard deviations (SD's) above the mean value of all signals generated on that array. If the targets on the HuProt(TM) are arranged in descending order of the Z-score, the S-score is the difference (also in units of SD's) between the Z-scores. The S-score therefore represents the relative target specificity of an Ab to its intended target.



SDS-PAGE analysis of purified, BSA-free CREB5 antibody (clone PCRP-CREB5-1G8) as confirmation of integrity and purity.

## Description

CREB5 antibody detects cAMP response element-binding protein 5, a transcription factor encoded by the CREB5 gene. CREB5 is a member of the CREB/ATF family of transcription factors and regulates gene expression in response to cAMP and stress signals. Because CREB5 participates in development, stress adaptation, and cancer progression, CREB5 antibody is widely used in oncology, molecular biology, and transcriptional regulation research.

CREB5 binds to cAMP response elements within promoters to regulate transcription of target genes. Its activity is

modulated by phosphorylation through signaling pathways including PKA and MAPK. By integrating extracellular stimuli with nuclear transcriptional responses, CREB5 influences cell survival, proliferation, and differentiation. In cancer biology, aberrant CREB5 activity has been linked to metastasis and resistance to therapy.

The CREB5 antibody clone PCR5-CREB5-1G8 provides specific and reproducible detection of this transcription factor. Clone PCR5-CREB5-1G8 has been cited in peer-reviewed studies investigating gene regulation, tumor biology, and developmental processes. Its applications include immunoblotting, immunohistochemistry, and chromatin-related assays, where precise recognition of transcription factors is required.

Research using clone PCR5-CREB5-1G8 has clarified how CREB5 regulates stress-responsive transcription in neuronal and epithelial cells. In oncology, this antibody has been used to explore CREB5 overexpression in aggressive cancers, where it promotes invasion and survival signaling. Beyond cancer, CREB5 detection has supported studies of metabolic regulation, neural development, and endocrine signaling, highlighting its broad biological relevance.

NSJ Bioreagents supplies this CREB5 antibody to support oncology, developmental biology, and transcriptional research. Alternate designations include cAMP response element-binding protein 5 antibody, transcription factor CREB5 antibody, CREB/ATF family member antibody, stress response transcription factor antibody, and gene expression regulator antibody.

## Application Notes

Optimal dilution of the CREB5 antibody should be determined by the researcher.

## Immunogen

Recombinant full-length human CREB5 protein was used as the immunogen for the CREB5 antibody.

## Storage

Aliquot the CREB5 antibody and store frozen at -20°C or colder. Avoid repeated freeze-thaw cycles.