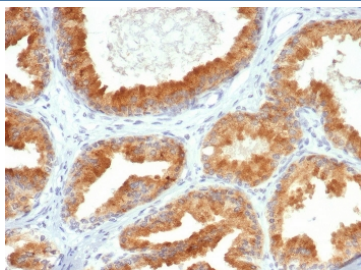


CREB3L4 Antibody / AIBZIP [clone PCRP-CREB3L4-1A3] (V4730)

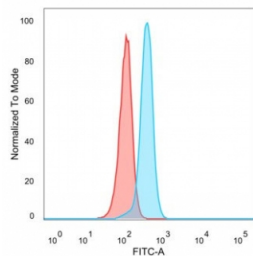
| Catalog No. | Formulation | Size |
|----------------|---|--------|
| V4730-100UG | 0.2 mg/ml in 1X PBS with 0.1 mg/ml BSA (US sourced), 0.05% sodium azide | 100 ug |
| V4730-20UG | 0.2 mg/ml in 1X PBS with 0.1 mg/ml BSA (US sourced), 0.05% sodium azide | 20 ug |
| V4730SAF-100UG | 1 mg/ml in 1X PBS; BSA free, sodium azide free | 100 ug |

[Bulk quote request](#)

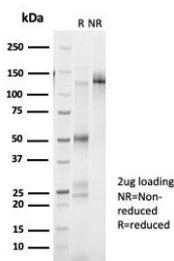
| | |
|---------------------------|--|
| Availability | 1-3 business days |
| Species Reactivity | Human |
| Format | Purified |
| Host | Mouse |
| Clonality | Monoclonal (mouse origin) |
| Isotype | Mouse IgG2c, kappa |
| Clone Name | PCRP-CREB3L4-1A3 |
| Purity | Protein A/G affinity |
| UniProt | Q8TEY5 |
| Localization | Nucleus |
| Applications | Flow Cytometry : 1-2ug/million cells Immunofluorescence : 1-2ug/ml Immunohistochemistry (FFPE) : 1-2ug/ml for 30 min at RT |
| Limitations | This CREB3L4 antibody is available for research use only. |



IHC staining of FFPE human prostate cancer tissue with CREB3L4 antibody (clone PCRP-CREB3L4-1A3). HIER: boil tissue sections in pH 9 10mM Tris with 1mM EDTA for 20 min and allow to cool before testing.



Analysis of a HuProt(TM) microarray containing more than 19,000 full-length human proteins using CREB3L4 antibody (clone PCRP-CREB3L4-1A3). Z- and S- Score: The Z-score represents the strength of a signal that a monoclonal antibody (in combination with a fluorescently-tagged anti-IgG secondary antibody) produces when binding to a particular protein on the HuProt(TM) array. Z-scores are described in units of standard deviations (SD's) above the mean value of all signals generated on that array. If targets on HuProt(TM) are arranged in descending order of the Z-score, the S-score is the difference (also in units of SD's) between the Z-score. S-score therefore represents the relative target specificity of a mAb to its intended target. A mAb is considered to specific to its intended target, if the mAb has an S-score of at least 2.5. For example, if a mAb binds to protein X with a Z-score of 43 and to protein Y with a Z-score of 14, then the S-score for the binding of that mAb to protein X is equal to 29.



Description

CREB3L4 is a transcriptional activator that may play a role in the unfolded protein response.

Application Notes

Optimal dilution of the CREB3L4 antibody should be determined by the researcher.

Immunogen

A recombinant partial protein sequence (within amino acids 1-298) from the human protein was used as the immunogen for the CREB3L4 antibody.

Storage

Aliquot the CREB3L4 antibody and store frozen at -20oC or colder. Avoid repeated freeze-thaw cycles.

