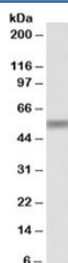


CREB3L2 Antibody (R34290)

Catalog No.	Formulation	Size
R34290-100UG	0.5 mg/ml in 1X TBS, pH7.3, with 0.5% BSA (US sourced) and 0.02% sodium azide	100 ug

[Bulk quote request](#)

Availability	1-3 business days
Species Reactivity	Human, Mouse, Rat
Predicted Reactivity	Cow, Dog
Format	Antigen affinity purified
Host	Goat
Clonality	Polyclonal (goat origin)
Isotype	Goat Ig
Purity	Antigen affinity
UniProt	Q70SY1
Gene ID	64764
Applications	Western Blot : 1-3ug/ml ELISA (peptide) LOD : 1:16000
Limitations	This CREB3L2 antibody is available for research use only.



Western blot testing of rat testis lysate with CREB3L2 antibody at 1ug/ml. Predicted molecular weight: ~57kDa (rat isoform 1).

Description

Additional name(s) for this target protein: CAMP responsive element binding protein 3-like 2

Application Notes

Optimal dilution of the CREB3L2 antibody should be determined by the researcher.

Immunogen

Amino acids HSLQEPYTASVRS were used as the immunogen for this CREB3L2 antibody. This sequence is common to human isoforms 1 and 2 and mouse/rat isoform 1.

Storage

Aliquot and store the CREB3L2 antibody at -20oC.