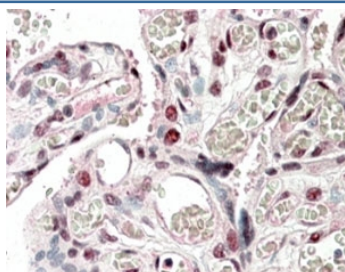


## CREB3L2 Antibody (R33612)

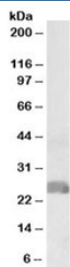
Catalog No.	Formulation	Size
R33612-100UG	0.5 mg/ml in 1X TBS, pH7.3, with 0.5% BSA (US sourced) and 0.02% sodium azide	100 ug

[Bulk quote request](#)

Availability	1-3 business days
Species Reactivity	Human
Format	Antigen affinity purified
Host	Goat
Clonality	Polyclonal (goat origin)
Isotype	Goat Ig
Purity	Antigen affinity
UniProt	Q70SY1
Gene ID	64764
Applications	Western Blot : 1-3ug/ml Immunohistochemistry (FFPE) : 5-10ug/ml ELISA (peptide) LOD : 1:128000
Limitations	This CREB3L2 antibody is available for research use only.



IHC staining of FFPE human placenta with CREB3L2 antibody at 5ug/ml. HIER: steamed with pH6 citrate buffer, AP-staining.



Western blot testing of human placenta lysate with CREB3L2 antibody at 1ug/ml.  
Predicted molecular weight: ~57/51/28kDa (isoforms 1/2/3).

## Description

Additional name(s) for this target protein: CAMP responsive element binding protein 3-like 2

## Application Notes

Optimal dilution of the CREB3L2 antibody should be determined by the researcher.

## Immunogen

Amino acids DRKLSELPDGE were used as the immunogen for this CREB3L2 antibody. This sequence is common to human isoforms 1, 2 and 3, and mouse/rat isoform 1.

## Storage

Aliquot and store the CREB3L2 antibody at -20oC.