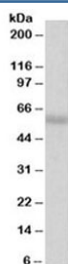


## CREB3L1 Antibody / OASIS (R33445)

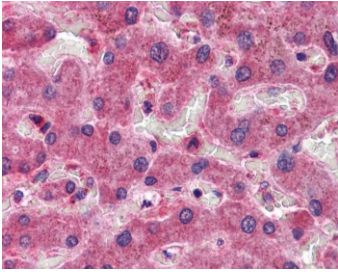
| Catalog No.  | Formulation   | Size   |
|--------------|---|--------|
| R33445-100UG | 0.5 mg/ml in 1X TBS, pH7.3, with 0.5% BSA (US sourced) and 0.02% sodium azide | 100 ug |

[Bulk quote request](#)

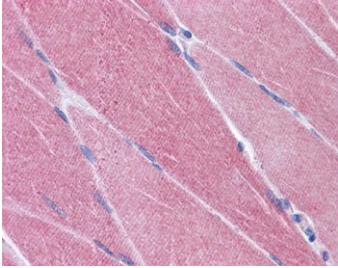
|                      |  |
|----------------------|--|
| Availability         | 1-3 business days  |
| Species Reactivity   | Human  |
| Predicted Reactivity | Mouse, Rat   |
| Format               | Antigen affinity purified  |
| Host                 | Goat   |
| Clonality            | Polyclonal (goat origin)   |
| Isotype              | Goat Ig  |
| Purity               | Antigen affinity   |
| Gene ID              | 90993  |
| Localization         | Cytoplasmic, nuclear   |
| Applications         | Western Blot : 1-3ug/ml<br>IHC (FFPE) : 3.75ug/ml<br>ELISA (peptide) LOD : 1:32000 |
| Limitations          | This CREB3L1 antibody is available for research use only.                          |



Western blot testing of A549 lysate with CREB3L1 antibody at 2ug/ml. Predicted molecular weight: ~57 kDa. The ~47 kDa isoform may also be visualized.



IHC testing of FFPE human liver tissue with CREB3L1 antibody at 3.75ug/ml. Required HIER: steamed antigen retrieval with pH6 citrate buffer; AP-staining.



IHC testing of FFPE human skeletal muscle tissue with CREB3L1 antibody at 3.75ug/ml. Required HIER: steamed antigen retrieval with pH6 citrate buffer; AP-staining.

## Description

Additional name(s) for this target protein: CAMP responsive element binding protein 3-like 1; OASIS

## Application Notes

Optimal dilution of the CREB3L1 antibody should be determined by the researcher.

## Immunogen

Amino acids DFSHSKEWFHDRD were used as the immunogen for this CREB3L1 antibody.

## Storage

Aliquot and store the CREB3L1 antibody at -20oC.