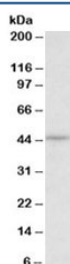


CREB3 Antibody (R34197)

Catalog No.	Formulation	Size
R34197-100UG	0.5 mg/ml in 1X TBS, pH7.3, with 0.5% BSA (US sourced) and 0.02% sodium azide	100 ug

[Bulk quote request](#)

Availability	1-3 business days
Species Reactivity	Human
Format	Antigen affinity purified
Host	Goat
Clonality	Polyclonal (goat origin)
Isotype	Goat Ig
Purity	Antigen affinity
Gene ID	10488
Applications	Western Blot : 0.3-1ug/ml ELISA (peptide) LOD : 1:128000
Limitations	This CREB3 antibody is available for research use only.



Western blot testing of HepG2 lysate with CREB3 antibody at 0.3ug/ml. Predicted molecular weight: ~42kDa.

Description

Additional name(s) for this target protein: CAMP responsive element binding protein 3

Application Notes

Optimal dilution of the CREB3 antibody should be determined by the researcher.

Immunogen

Amino acids HHDHTYSLPRET were used as the immunogen for this CREB3 antibody.

Storage

Aliquot and store the CREB3 antibody at -20oC.