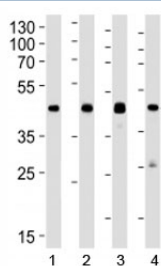


## CREB1 Antibody [clone 1335CT115.203.189] (F52446)

Catalog No.	Formulation	Size
F52446-0.4ML	In 1X PBS, pH 7.4, with 0.09% sodium azide	0.4 ml
F52446-0.08ML	In 1X PBS, pH 7.4, with 0.09% sodium azide	0.08 ml

[Bulk quote request](#)

<b>Availability</b>	1-3 business days
<b>Species Reactivity</b>	Human, Mouse, Rat
<b>Format</b>	Purified
<b>Clonality</b>	Monoclonal (mouse origin)
<b>Isotype</b>	Mouse IgG1, k
<b>Clone Name</b>	1335CT115.203.189
<b>Purity</b>	Purified
<b>UniProt</b>	P16220
<b>Applications</b>	Western Blot : 1:1000
<b>Limitations</b>	This CREB1 antibody is available for research use only.



Western blot analysis of lysate from 1) human A549, 2) mouse Neuro-2a, 3) mouse NIH3T3, and 4) rat C6 cell line using CREB1 antibody at 1:1000. Predicted molecular weight is 37 kDa but routinely observed at ~43 kDa.

## Description

Phosphorylation-dependent transcription factor that stimulates transcription upon binding to the DNA cAMP response element (CRE), a sequence present in many viral and cellular promoters. Transcription activation is enhanced by the TORC coactivators which act independently of Ser-133 phosphorylation. Involved in different cellular processes including the synchronization of circadian rhythmicity and the differentiation of adipose cells.

## Application Notes

Titration of the CREB1 antibody may be required due to differences in protocols and secondary/substrate sensitivity.

## **Immunogen**

This CREB1 antibody was produced from a mouse immunized with a recombinant protein from human CREB1.

## **Storage**

Aliquot the CREB1 antibody and store frozen at -20oC or colder. Avoid repeated freeze-thaw cycles.