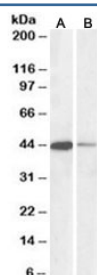


CREB Antibody (R33638)

Catalog No.	Formulation	Size
R33638-100UG	0.5 mg/ml in 1X TBS, pH7.3, with 0.5% BSA (US sourced) and 0.02% sodium azide	100 ug

[Bulk quote request](#)

Availability	1-3 business days
Species Reactivity	Human, Mouse
Predicted Reactivity	Cow, Dog, Pig
Format	Antigen affinity purified
Host	Goat
Clonality	Polyclonal (goat origin)
Isotype	Goat Ig
Purity	Antigen affinity
Gene ID	1385
Applications	Western Blot : 0.1-0.3ug/ml ELISA (peptide) LOD : 1:128000
Limitations	This CREB antibody is available for research use only.



Western blot testing of human Jurkat [A] and mouse NIH3T3 [B] nuclear lysates with CREB antibody at 0.1ug/ml. Predicted molecular weight is 37kDa but routinely observed at ~43kDa.

Description

Additional name(s) for this target protein: CAMP responsive element binding protein 1

Application Notes

Optimal dilution of the CREB antibody should be determined by the researcher.

Immunogen

Amino acids DSQESVDSVTDSQK were used as the immunogen for this CREB antibody.

Storage

Aliquot and store the CREB antibody at -20oC.