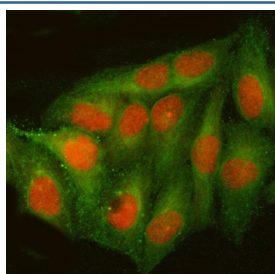


CREB-2 Antibody / ATF4 (RQ8047)

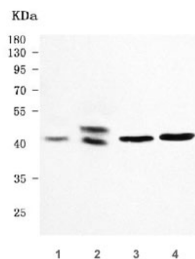
Catalog No.	Formulation	Size
RQ8047	0.5mg/ml if reconstituted with 0.2ml sterile DI water	100 ug

Bulk quote request

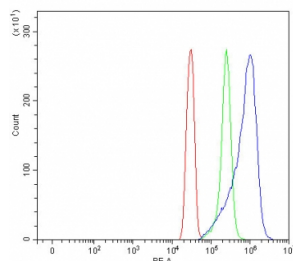
Availability	1-3 business days
Species Reactivity	Human, Mouse, Rat
Format	Antigen affinity purified
Host	Rabbit
Clonality	Polyclonal (rabbit origin)
Isotype	Rabbit IgG
Purity	Antigen affinity purified
Buffer	Lyophilized from 1X PBS with 2% Trehalose
UniProt	P18848
Localization	Nuclear, cytoplasmic, cell membrane
Applications	Western Blot : 0.5-1ug/ml Immunofluorescence : 5ug/ml Flow Cytometry : 1-3ug/million cells Direct ELISA : 0.1-0.5ug/ml
Limitations	This CREB-2 antibody is available for research use only.



Immunofluorescent staining of FFPE human HeLa cells with CREB-2 antibody (red) and Alpha Tubulin mAb (green). HIER: steam section in pH6 citrate buffer for 20 min.



Western blot testing of 1) human HepG2, 2) human 293T, 3) rat brain and 4) mouse brain tissue lysate with CREB-2 antibody. Predicted molecular weight ~39 kDa.



Flow cytometry testing of fixed and permeabilized human SiHa cells with CREB-2 antibody at 1ug/million cells (blocked with goat sera); Red=cells alone, Green=isotype control, Blue= CREB-2 antibody.

Description

ATF4, Activating Transcription Factor 4, is also known as Cyclic AMP-responsive element-binding protein 2 (CREB-2). ATF4/CREB-2 belongs to the large ATF/CREB family of transcription factors which bind DNA via their basic region and dimerize via their leucine zipper domain to form a variety of homo- and heterodimers to regulate gene transcription. Unlike CREB, which activates transcription from CRE-containing promoters, CREB-2 functions as a specific repressor of CRE-dependent transcription.

Application Notes

Optimal dilution of the CREB-2 antibody should be determined by the researcher.

Immunogen

E. coli-derived recombinant human protein (amino acids E10-E210) was used as the immunogen for the CREB-2 antibody.

Storage

After reconstitution, the CREB-2 antibody can be stored for up to one month at 4°C. For long-term, aliquot and store at -20°C. Avoid repeated freezing and thawing.