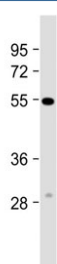


CRCL Antibody / Calcitonin receptor-like receptor (F55077)

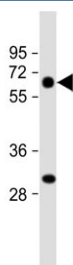
Catalog No.	Formulation	Size
F55077-0.4ML	In 1X PBS, pH 7.4, with 0.09% sodium azide	0.4 ml
F55077-0.08ML	In 1X PBS, pH 7.4, with 0.09% sodium azide	0.08 ml

Bulk quote request

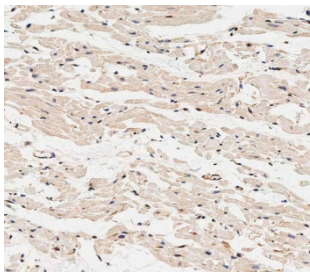
Availability	1-2 business days
Species Reactivity	Human
Format	Purified
Clonality	Polyclonal (rabbit origin)
Isotype	Rabbit Ig
UniProt	Q16602
Applications	Western Blot : 1:1000-1:2000 Immunohistochemistry : 1:100-1:500
Limitations	This CRCL antibody is available for research use only.



Western blot testing of human heart tissue lysate with CRCL antibody. Predicted molecular weight ~53 kDa.



Western blot testing of human lung tissue lysate with CRCL antibody. Predicted molecular weight ~53 kDa.



IHC staining of FFPE human heart tissue with CRCL antibody. HIER: steam section in pH9 EDTA buffer for 20 min and allow to cool prior to staining.

Description

CRCL, also called CALCRL and Calcitonin gene-related peptide type 1 receptor, is a member of the G-protein coupled receptor (GPCR) family, a group of proteins that play a key role in transmitting signals from the outside of the cell to the inside. Specifically, CRCL is known for its involvement in regulating the activity of a neuropeptide called calcitonin gene-related peptide (CGRP), which is involved in pain transmission, migraine development, and vasodilation. CRCL plays a crucial role in mediating the effects of CGRP on various cellular processes. When CGRP binds to CRCL, it triggers a series of signaling cascades that ultimately lead to changes in cell function. For example, activation of CRCL by CGRP can lead to vasodilation in blood vessels, modulation of pain perception, and regulation of inflammatory responses. Dysregulation of this protein has been implicated in various diseases. Abnormalities in CRCL signaling have been linked to migraine development, chronic pain conditions, and cardiovascular diseases.

Application Notes

Titration of the CRCL antibody may be required due to differences in protocols and secondary/substrate sensitivity.

Immunogen

A portion of amino acids 340-367 from the human protein was used as the immunogen for this CRCL antibody.

Storage

Aliquot the CRCL antibody and store frozen at -20oC or colder. Avoid repeated freeze-thaw cycles.