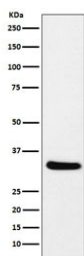


CRALBP Antibody / RLBP1 [clone AEFB-18] (RQ5383)

Catalog No.	Formulation	Size
RQ5383	Antibody in PBS with 0.02% sodium azide, 50% glycerol and 0.4-0.5mg/ml BSA	100 ul

[Bulk quote request](#)

Availability	1-2 weeks
Species Reactivity	Mouse, Rat
Format	Purified
Host	Rabbit
Clonality	Rabbit Monoclonal
Isotype	Rabbit IgG
Clone Name	AEFB-18
Purity	Affinity purified
UniProt	P12271
Applications	Western Blot : 1:500-1:2000
Limitations	This CRALBP antibody is available for research use only.



Western blot testing of mouse eyeball lysate with CRALBP antibody. Predicted molecular weight ~36 kDa.

Description

The protein encoded by the RLBP1 gene is a 36-kD water-soluble protein which carries 11-cis-retinaldehyde or 11-cis-retinal as physiologic ligands. It may be a functional component of the visual cycle. Mutations of this gene have been associated with severe rod-cone dystrophy, Bothnia dystrophy (nonsyndromic autosomal recessive retinitis pigmentosa) and retinitis punctata albescens. [RefSeq]

Application Notes

Optimal dilution of the CRALBP antibody should be determined by the researcher.

Immunogen

A synthetic peptide specific to human CRALBP / RLBP1 was used as the immunogen for the CRALBP antibody.

Storage

Store the CRALBP antibody at -20oC.