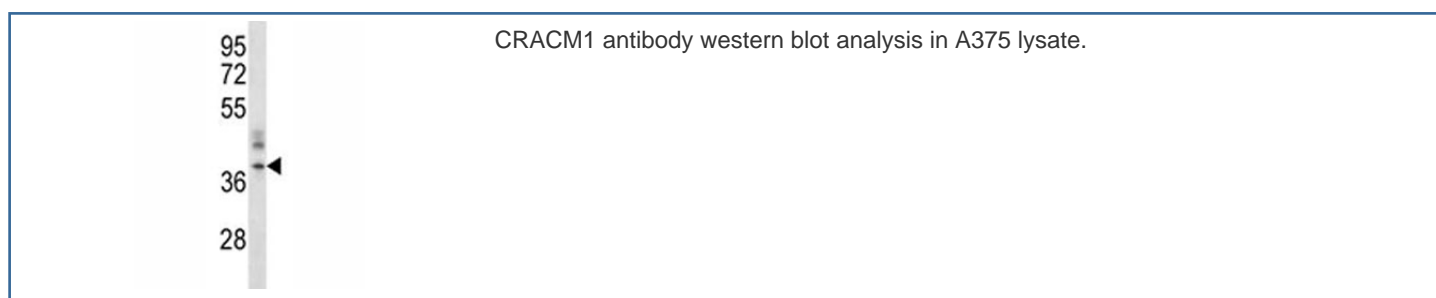


## CRACM1 Antibody (F43981)

Catalog No.	Formulation	Size
F43981-0.4ML	In 1X PBS, pH 7.4, with 0.09% sodium azide	0.4 ml
F43981-0.08ML	In 1X PBS, pH 7.4, with 0.09% sodium azide	0.08 ml

[Bulk quote request](#)

<b>Availability</b>	1-3 business days
<b>Species Reactivity</b>	Human
<b>Format</b>	Antigen affinity purified
<b>Clonality</b>	Polyclonal (rabbit origin)
<b>Isotype</b>	Rabbit Ig
<b>Purity</b>	Antigen affinity
<b>UniProt</b>	Q96D31
<b>Applications</b>	Western Blot : 1:1000
<b>Limitations</b>	This CRACM1 antibody is available for research use only.



### Description

CRACM1/ORAI1 is a plasma membrane protein essential for store-operated calcium entry.

### Application Notes

Titration of the CRACM1 antibody may be required due to differences in protocols and secondary/substrate sensitivity.

### Immunogen

A portion of amino acids 269-298 from the human protein was used as the immunogen for this CRACM1 antibody.

## Storage

Aliquot the CRACM1 antibody and store frozen at -20oC or colder. Avoid repeated freeze-thaw cycles.