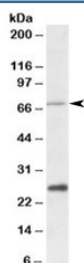


## CPT2 Antibody (R35051)

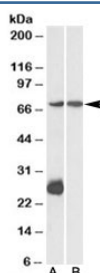
Catalog No.	Formulation	Size
R35051-100UG	0.5 mg/ml in 1X TBS, pH7.3, with 0.5% BSA (US sourced) and 0.02% sodium azide	100 ug

[Bulk quote request](#)

Availability	1-3 business days
Species Reactivity	Human, Mouse
Predicted Reactivity	Cow, Dog, Pig, Rat
Format	Antigen affinity purified
Host	Goat
Clonality	Polyclonal (goat origin)
Isotype	Goat Ig
Purity	Antigen affinity
Gene ID	1376
Applications	Western Blot : 1-3ug/ml ELISA (peptide) LOD : 1:8000
Limitations	This CPT2 antibody is available for research use only.



Western blot testing of human liver lysate with CPT2 antibody at 1ug/ml. Predicted molecular weight: ~74kDa. Both observed bands are blocked by the immunizing peptide.



Western blot testing of mouse heart (A) and liver (B) lysate with CPT2 antibody at 1ug/ml. Predicted molecular weight: ~74kDa.

## Description

Additional name(s) for this target protein: Carnitine palmitoyltransferase II

## Application Notes

Optimal dilution of the CPT2 antibody should be determined by the researcher.

## Immunogen

Amino acids PKSEYNDQLTRATN were used as the immunogen for this CPT2 antibody.

## Storage

Aliquot and store the CPT2 antibody at -20oC.