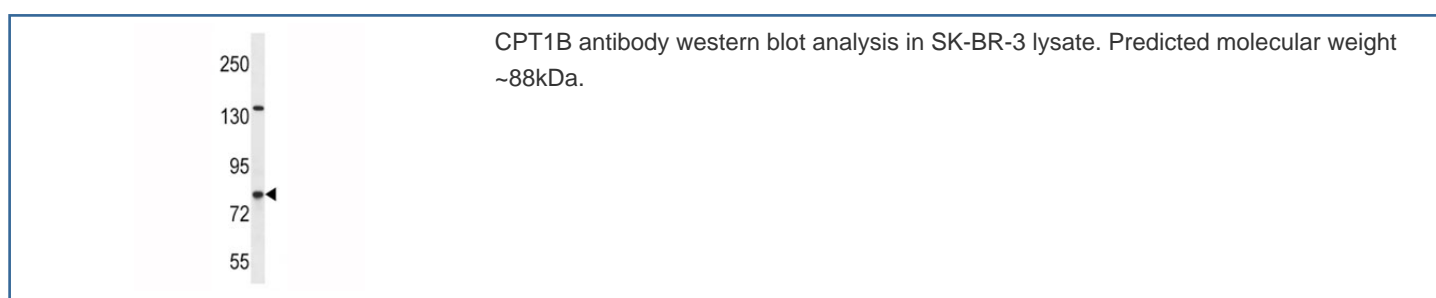


CPT1B Antibody (F44997)

Catalog No.	Formulation	Size
F44997-0.4ML	In 1X PBS, pH 7.4, with 0.09% sodium azide	0.4 ml
F44997-0.08ML	In 1X PBS, pH 7.4, with 0.09% sodium azide	0.08 ml

[Bulk quote request](#)

Availability	1-3 business days
Species Reactivity	Human
Format	Antigen affinity purified
Clonality	Polyclonal (rabbit origin)
Isotype	Rabbit Ig
Purity	Antigen affinity
UniProt	Q92523
Applications	Western Blot : 1:1000
Limitations	This CPT1B antibody is available for research use only.



Description

The protein encoded by this gene, a member of the carnitine/choline acetyltransferase family, is the rate-controlling enzyme of the long-chain fatty acid beta-oxidation pathway in muscle mitochondria. This enzyme is required for the net transport of long-chain fatty acyl-CoAs from the cytoplasm into the mitochondria. Multiple transcript variants encoding different isoforms have been found for this gene, and read-through transcripts are expressed from the upstream locus that include exons from this gene.

Application Notes

Titration of the CPT1B antibody may be required due to differences in protocols and secondary/substrate sensitivity.

Immunogen

A portion of amino acids 744-770 from the human protein was used as the immunogen for this CPT1B antibody.

Storage

Aliquot the CPT1B antibody and store frozen at -20oC or colder. Avoid repeated freeze-thaw cycles.