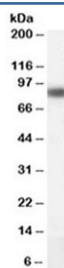


CPT1A Antibody / CPT1-L (R33564)

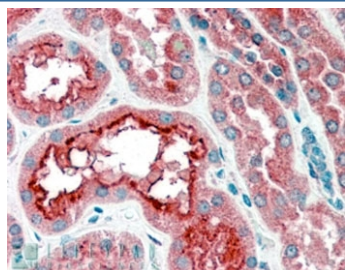
Catalog No.	Formulation	Size
R33564-100UG	0.5 mg/ml in 1X TBS, pH7.3, with 0.5% BSA (US sourced) and 0.02% sodium azide	100 ug

[Bulk quote request](#)

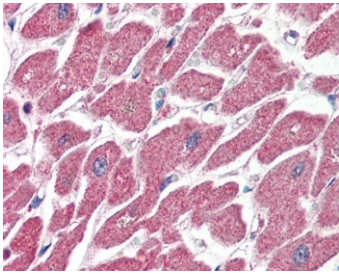
Availability	1-3 business days
Species Reactivity	Human
Format	Antigen affinity purified
Clonality	Polyclonal (goat origin)
Isotype	Goat Ig
Purity	Antigen affinity
Gene ID	1374
Applications	Western Blot : 0.1-0.3ug/ml Immunohistochemistry (FFPE) : 4-6ug/ml ELISA (peptide) LOD : 1:128000
Limitations	This CPT1A antibody is available for research use only.



Western blot testing of human liver lysate with CPT1A antibody at 0.1ug/ml. Predicted molecular weight ~86 kDa.



IHC staining of FFPE human kidney with CPT1A antibody at 4ug/ml. HIER: steamed with pH6 citrate buffer, AP-staining.



IHC staining of FFPE human heart with CPT1A antibody at 4ug/ml. HIER: steamed with pH6 citrate buffer, AP-staining.

Description

Additional name(s) for this target protein: Carnitine palmitoyltransferase 1A; Carnitine O-palmitoyltransferase 1, liver isoform; CPT1-L

Application Notes

Optimal dilution of the CPT1A antibody should be determined by the researcher.

Immunogen

Amino acids DPAQTVEQRLKLFK were used as the immunogen for this CPT1A antibody.

Storage

Aliquot and store the CPT1A antibody at -20oC.