

## CPT1A Antibody / CPT1-L (F48084)

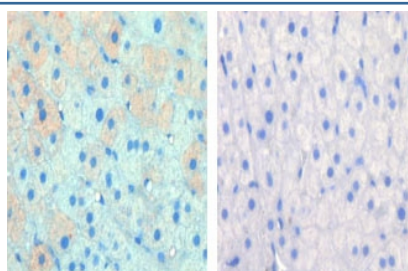
Catalog No.	Formulation	Size
F48084-0.4ML	In 1X PBS, pH 7.4, with 0.09% sodium azide	0.4 ml
F48084-0.08ML	In 1X PBS, pH 7.4, with 0.09% sodium azide	0.08 ml

**Bulk quote request**

<b>Availability</b>	1-3 business days
<b>Species Reactivity</b>	Human, Bovine
<b>Format</b>	Purified
<b>Clonality</b>	Polyclonal (rabbit origin)
<b>Isotype</b>	Rabbit Ig
<b>Purity</b>	Purified
<b>UniProt</b>	P50416
<b>Applications</b>	Western Blot : 1:1000 IHC (Paraffin) : 1:50-1:100
<b>Limitations</b>	This CPT1A antibody is available for research use only.



Western blot analysis of CPT1A antibody and Y79 lysate. Predicted molecular weight ~86kDa.



IHC data of FFPE cow lactation tissue tested with CPT1A antibody (left) and without primary Ab (right). This data was kindly offered by Hideaki Hayashi, University of Bern, Switzerland.

## Description

The mitochondrial oxidation of long-chain fatty acids is initiated by the sequential action of carnitine palmitoyltransferase I (which is located in the outer membrane and is detergent-labile) and carnitine palmitoyltransferase II (which is located in the inner membrane and is detergent-stable), together with a carnitine-acylcarnitine translocase. CPT I is the key enzyme in the carnitine-dependent transport across the mitochondrial inner membrane and its deficiency results in a decreased rate of fatty acid beta-oxidation.

## Application Notes

Titration of the CPT1A antibody may be required due to differences in protocols and secondary/substrate sensitivity.

## Immunogen

A portion of amino acids 606-636 from the human protein was used as the immunogen for this CPT1A antibody.

## Storage

Aliquot the CPT1A antibody and store frozen at -20oC or colder. Avoid repeated freeze-thaw cycles.