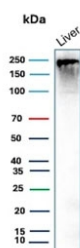


## CPS1 Antibody / Carbamoyl phosphate synthetase 1 [clone CPS1/9868] (V5680)

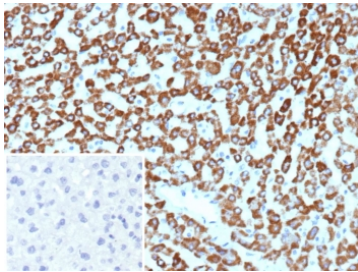
Catalog No.	Formulation	Size
V5680-100UG	0.2 mg/ml in 1X PBS with 0.1 mg/ml BSA (US sourced), 0.05% sodium azide	100 ug
V5680-20UG	0.2 mg/ml in 1X PBS with 0.1 mg/ml BSA (US sourced), 0.05% sodium azide	20 ug
V5680SAF-100UG	1 mg/ml in 1X PBS; BSA free, sodium azide free	100 ug

[Bulk quote request](#)

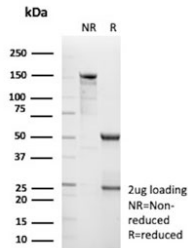
Availability	1-3 business days
Species Reactivity	Human
Format	Purified
Host	Mouse
Clonality	Monoclonal (mouse origin)
Isotype	Mouse IgG, kappa
Clone Name	CPS1/9868
Purity	Protein A/G affinity
UniProt	P31327
Localization	Cytoplasm
Applications	Immunohistochemistry (FFPE) : 1-2ug/ml Western Blot : 2-4ug/ml
Limitations	This CPS1 antibody is available for research use only.



Western blot testing of human liver tissue lysate with CPS1 antibody (clone CPS1/9868). Predicted molecular weight ~165 kDa but may be observed at higher molecular weights due to glycosylation.



IHC staining of FFPE human hepatocellular carcinoma tissue with CPS1 antibody (clone CPS1/9868). Inset: PBS used in place of primary Ab (secondary Ab negative control).  
HIER: boil tissue sections in pH 9 10mM Tris with 1mM EDTA for 20 min and allow to cool before testing.



SDS-PAGE analysis of purified, BSA-free CPS1 antibody (clone CPS1/9868) as confirmation of integrity and purity.

## Description

This MAb recognizes a protein of 165kDa, identified as carbamoyl phosphate synthetase 1 (CPS1). This mitochondrial enzyme catalyzes synthesis of carbamoyl phosphate from ammonia and bicarbonate.

## Application Notes

Optimal dilution of the CPS1 antibody should be determined by the researcher.

## Immunogen

A portion of amino acids 800-100 from human CPS1 protein was used as the immunogen for the CPS1 antibody.

## Storage

Aliquot the CPS1 antibody and store frozen at -20oC or colder. Avoid repeated freeze-thaw cycles.