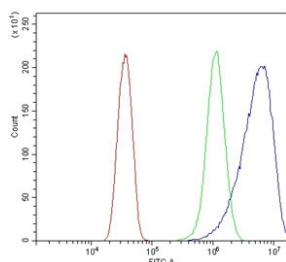


cPLA2-beta Antibody / PLA2G4B (RQ6334)

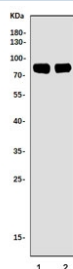
Catalog No.	Formulation	Size
RQ6334	0.5mg/ml if reconstituted with 0.2ml sterile DI water	100 ug

Bulk quote request

Availability	1-3 business days
Species Reactivity	Human, Mouse, Rat
Format	Purified
Clonality	Polyclonal (rabbit origin)
Isotype	Rabbit IgG
Purity	Antigen affinity purified
Buffer	Lyophilized from 1X PBS with 2% Trehalose
UniProt	P0C869
Applications	Western Blot : 0.5-1ug/ml Flow Cytometry : 1-3ug/million cells Direct ELISA : 0.1-0.5ug/ml
Limitations	This cPLA2-beta antibody is available for research use only.



Flow cytometry testing of human HeLa cells with cPLA2-beta antibody at 1ug/million cells (blocked with goat sera); Red=cells alone, Green=isotype control, Blue=cPLA2-beta antibody.



Western blot testing of 1) rat brain and 2) mouse brain tissue lysate with cPLA2-beta antibody. Predicted molecular weight ~88 kDa.

Description

Phospholipase A2, group IVB (cytosolic), also known as PLA2G4B, is a human gene. This gene encodes a member of the cytosolic phospholipase A2 protein family. Phospholipase A2 enzymes hydrolyze the sn-2 bond of phospholipids, releasing lysophospholipids and fatty acids. This enzyme may be associated with mitochondria and early endosomes. Most tissues also express read-through transcripts from the upstream gene into this gene, some of which may encode fusion proteins combining the N-terminus of the upstream gene including its JmjC domain with the almost complete coding region of this gene, including the C2 and cytoplasmic phospholipase A2 domains.

Application Notes

Optimal dilution of the cPLA2-beta antibody should be determined by the researcher.

Immunogen

Recombinant human protein (amino acids N61-H781) was used as the immunogen for the cPLA2-beta antibody.

Storage

After reconstitution, the cPLA2-beta antibody can be stored for up to one month at 4°C. For long-term, aliquot and store at -20°C. Avoid repeated freezing and thawing.