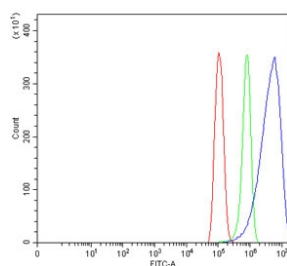


CPEB4 Antibody (RQ6852)

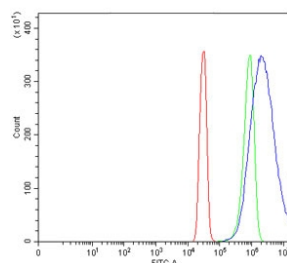
Catalog No.	Formulation	Size
RQ6852	0.5mg/ml if reconstituted with 0.2ml sterile DI water	100 ug

Bulk quote request

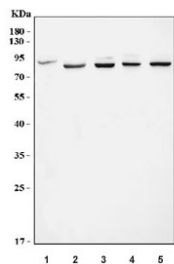
Availability	1-3 business days
Species Reactivity	Human, Mouse, Rat
Format	Antigen affinity purified
Host	Rabbit
Clonality	Polyclonal (rabbit origin)
Isotype	Rabbit IgG
Purity	Antigen affinity purified
Buffer	Lyophilized from 1X PBS with 2% Trehalose
UniProt	Q17RY0
Applications	Western Blot : 1-2ug/ml Flow Cytometry : 1-3ug/million cells Direct ELISA : 0.1-0.5ug/ml
Limitations	This CPEB4 antibody is available for research use only.



Flow cytometry testing of human PC-3 cells with CPEB4 antibody at 1ug/million cells (blocked with goat sera); Red=cells alone, Green=isotype control, Blue= CPEB4 antibody.



Flow cytometry testing of human SiHa cells with CPEB4 antibody at 1ug/million cells (blocked with goat sera); Red=cells alone, Green=isotype control, Blue= CPEB4 antibody.



Western blot testing of 1) human HeLa, 2) rat brain, 3) rat kidney, 4) mouse brain and 5) mouse kidney tissue lysate with CPEB4 antibody. Expected molecular weight: 80-90 kDa.

Description

Cytoplasmic polyadenylation element binding protein 4 (CPEB4) is a sequence-specific RNA-binding protein that participates in translational control. CPEB4 is a member of the CPEB family, which includes CPEB1, CPEB2, CPEB3, and CPEB4, all of which share structure and sequence identity in the C-terminal RNA-binding domain (RBD). CPEB4 has two domains: one that is structured for RNA binding and one that is unstructured and low complexity that has no known function.

Application Notes

Optimal dilution of the CPEB4 antibody should be determined by the researcher.

Immunogen

Recombinant human protein (amino acids D3-N462) was used as the immunogen for the CPEB4 antibody.

Storage

After reconstitution, the CPEB4 antibody can be stored for up to one month at 4°C. For long-term, aliquot and store at -20°C. Avoid repeated freezing and thawing.