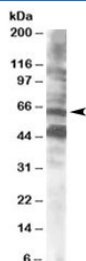


## CPEB Antibody (R35061)

Catalog No.	Formulation	Size
R35061-100UG	0.5 mg/ml in 1X TBS, pH7.3, with 0.5% BSA (US sourced) and 0.02% sodium azide	100 ug

[Bulk quote request](#)

Availability	1-3 business days
Species Reactivity	Human
Predicted Reactivity	Cow
Format	Antigen affinity purified
Host	Goat
Clonality	Polyclonal (goat origin)
Isotype	Goat Ig
Purity	Antigen affinity
Gene ID	64506
Applications	Western Blot : 0.5-2ug/ml ELISA (peptide) LOD : 1:128000
Limitations	This CPEB antibody is available for research use only.



Western blot testing of human brain lysate with CPEB antibody at 0.5ug/ml. Both the expected ~65kDa band and the additional ~48kDa band are blocked by the immunizing peptide.

## Description

Additional name(s) for this target protein: Cytoplasmic polyadenylation element binding protein 1; CPEB1

## Application Notes

Optimal dilution of the CPEB antibody should be determined by the researcher.

## Immunogen

Amino acids PLMRNQKNRDSS were used as the immunogen for this CPEB antibody.

## Storage

Aliquot and store the CPEB antibody at -20oC.