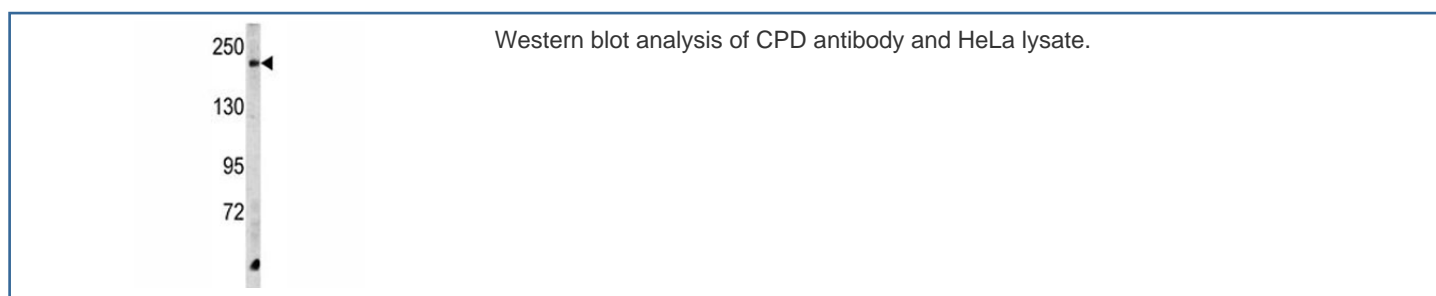


CPD Antibody / Carboxypeptidase D (F49825)

Catalog No.	Formulation	Size
F49825-0.4ML	In 1X PBS, pH 7.4, with 0.09% sodium azide	0.4 ml
F49825-0.08ML	In 1X PBS, pH 7.4, with 0.09% sodium azide	0.08 ml

[Bulk quote request](#)

Availability	1-3 business days
Species Reactivity	Human
Predicted Reactivity	Mouse, Rat
Format	Purified
Clonality	Polyclonal (rabbit origin)
Isotype	Rabbit Ig
Purity	Purified
UniProt	O75976
Applications	Western Blot : 1:1000
Limitations	This CPD antibody is available for research use only.



Description

The metallo-carboxypeptidase family of enzymes is divided into 2 subfamilies based on sequence similarities. The pancreatic carboxypeptidase-like and the regulatory B-type carboxypeptidase subfamilies. Carboxypeptidase D has been identified as a regulatory B-type carboxypeptidase. CPD is a homolog of duck gp180, a hepatitis B virus-binding protein.

Application Notes

Titration of the CPD antibody may be required due to differences in protocols and secondary/substrate sensitivity.

Immunogen

A portion of amino acids 1019-1048 from the human protein was used as the immunogen for this CPD antibody.

Storage

Aliquot the CPD antibody and store frozen at -20oC or colder. Avoid repeated freeze-thaw cycles.